



With Ed Downs
Aug 23, 2022

Welcome to the Inner Circle!

Topics:

- Nirvana's Trading Agenda
- Trade Throttle Research
- Equities Trading
- Option Trading
- Futures Trading
- Inner Circle Goals
- Joining the Inner Circle



Nirvana's Trading Agenda

Over the past year, we have engaged an internal project to develop **Real Time Trading** Approaches to deploy on a large account that we were given access to.



Trades from
one of our
Futures
Strategies

Why the Inner Circle?

Our **Trading Team** has been focused on automated trading methods and deploying them in live accounts.

We are raising funds to complete this work and deploy these methods for Inner Circle Members.

In return for One Time Seat Purchases, we are providing investor access to the **Trade Streams** we are creating.

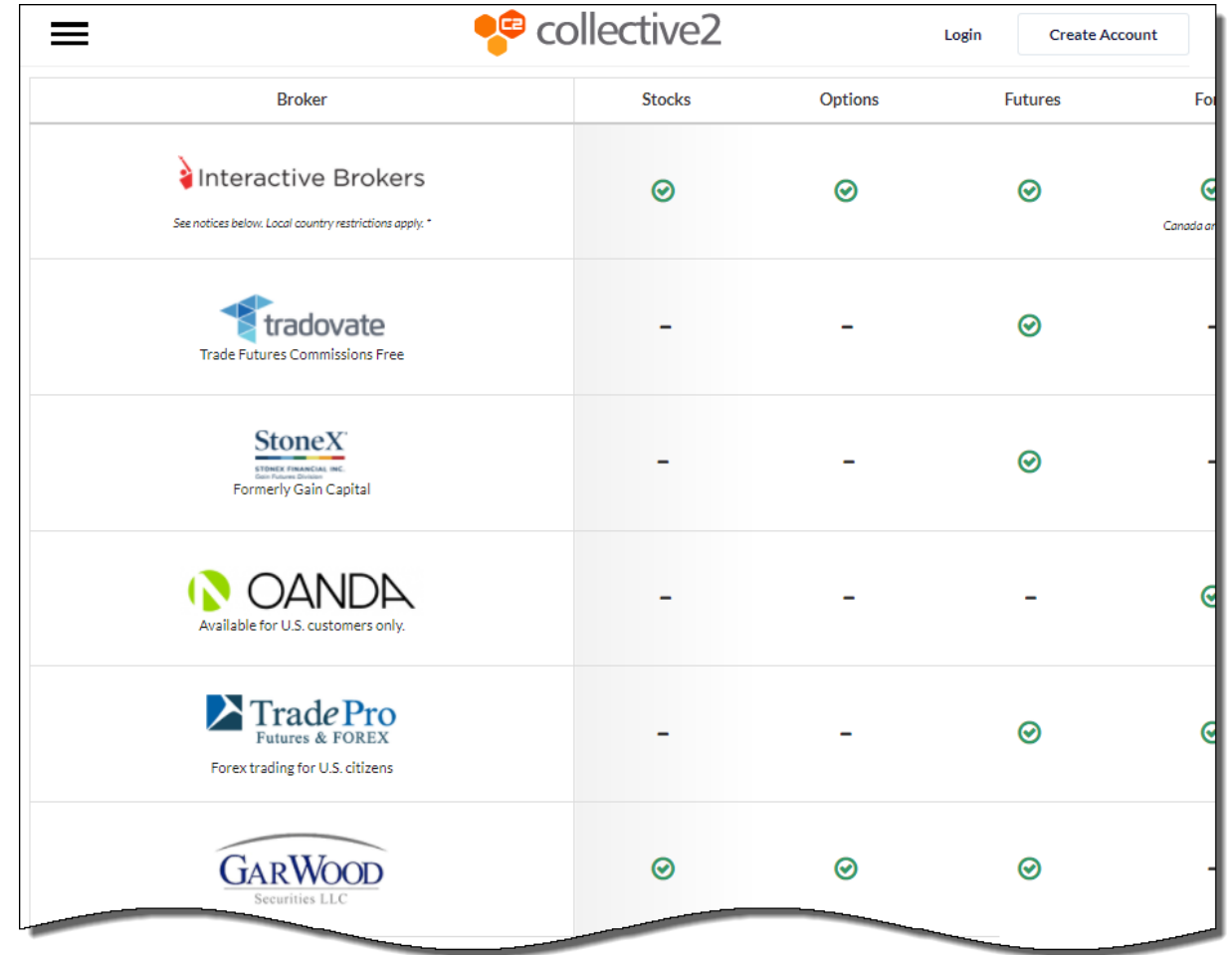


How it Works







Collective 2 facilitates the distribution of trades into accounts at multiple brokers.

Each Trade System trades into a Trade Leader Strategy at C2.

Each trade is instantly sent to anyone's account who is subscribed.



The screenshot shows the Collective 2 website interface. At the top, there is a navigation bar with the Collective 2 logo, a 'Login' button, and a 'Create Account' button. Below the navigation bar is a table listing supported brokers and their trading capabilities. The table has columns for 'Broker', 'Stocks', 'Options', 'Futures', and 'Forex'. The brokers listed are Interactive Brokers, Tradovate, StoneX, OANDA, TradePro, and Garwood Securities LLC. Each broker row shows checkmarks or dashes indicating which trading instruments are supported.

Broker	Stocks	Options	Futures	Forex
 Interactive Brokers <small>See notices below. Local country restrictions apply. *</small>	✓	✓	✓	✓
 tradovate <small>Trade Futures Commissions Free</small>	-	-	✓	-
 StoneX <small>STONEX FINANCIAL, INC. Formerly Gain Capital</small>	-	-	✓	-
 OANDA <small>Available for U.S. customers only.</small>	-	-	-	✓
 TradePro <small>Futures & FOREX Forex trading for U.S. citizens</small>	-	-	✓	✓
 GARWOOD <small>Securities LLC</small>	✓	✓	✓	-

Some of Collective 2's Supported Brokers



Current Research

I.C. Throttle One



The Concept Behind Throttle One

Any Index is an Average. At almost any time, there will be Stocks going both Up and Down.

We want to Buy the Strong Stocks when the index itself is going Up, and Sell the Weak Stocks when the Index is going Down.



VisualTrader's Proprietary Instrumentation

The **Leading Indicator** provides a Composite View of the movement of all stocks in the Index.

We can read the value of the Leading Indicator to drive the **Trade Throttle** in the direction of the market.



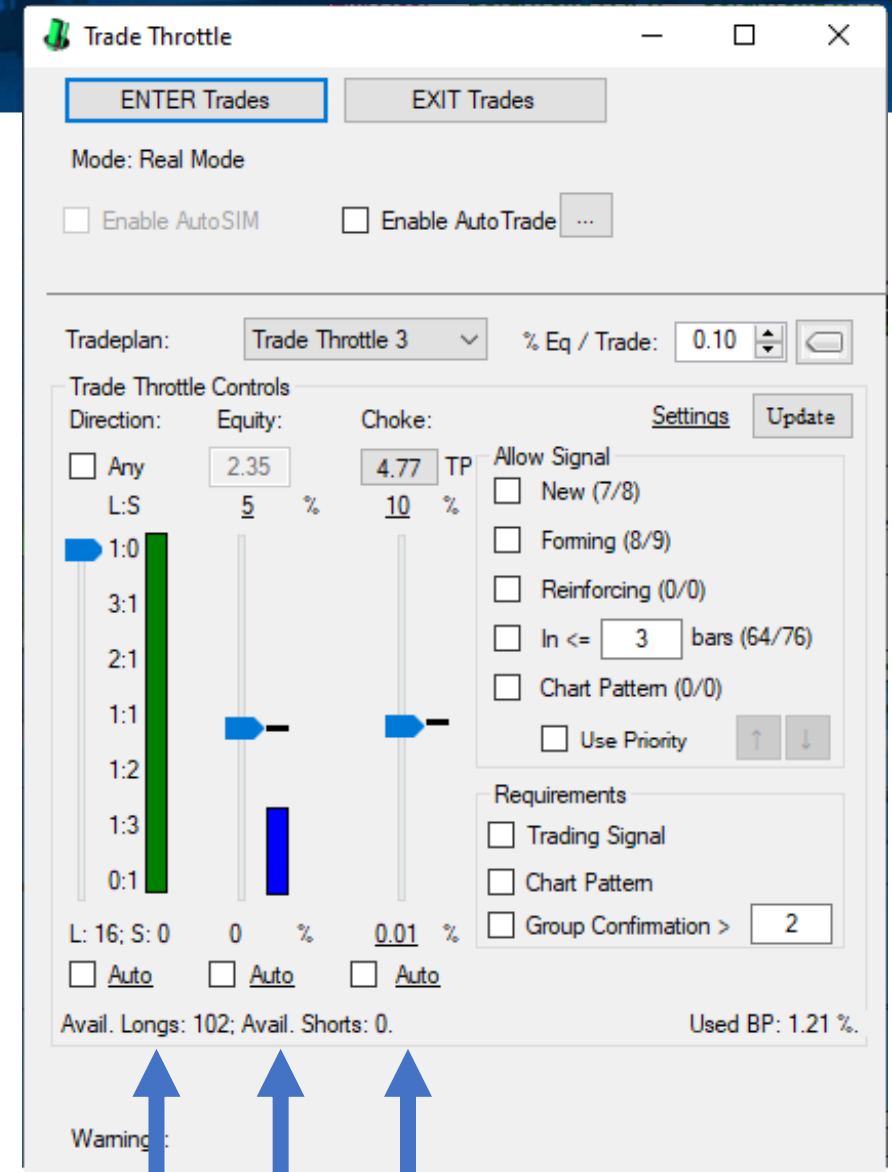
What is the Trade Throttle?

The Throttle is a **Trading Interface in VisualTrader** that can establish Direction, Allocation, and Exits.

Trades can be fired off on multiple instruments, in the direction of Strength and Size with just a few clicks.

Procedure:

1. Set Direction
2. Set Equity
3. Click Enter Trades.

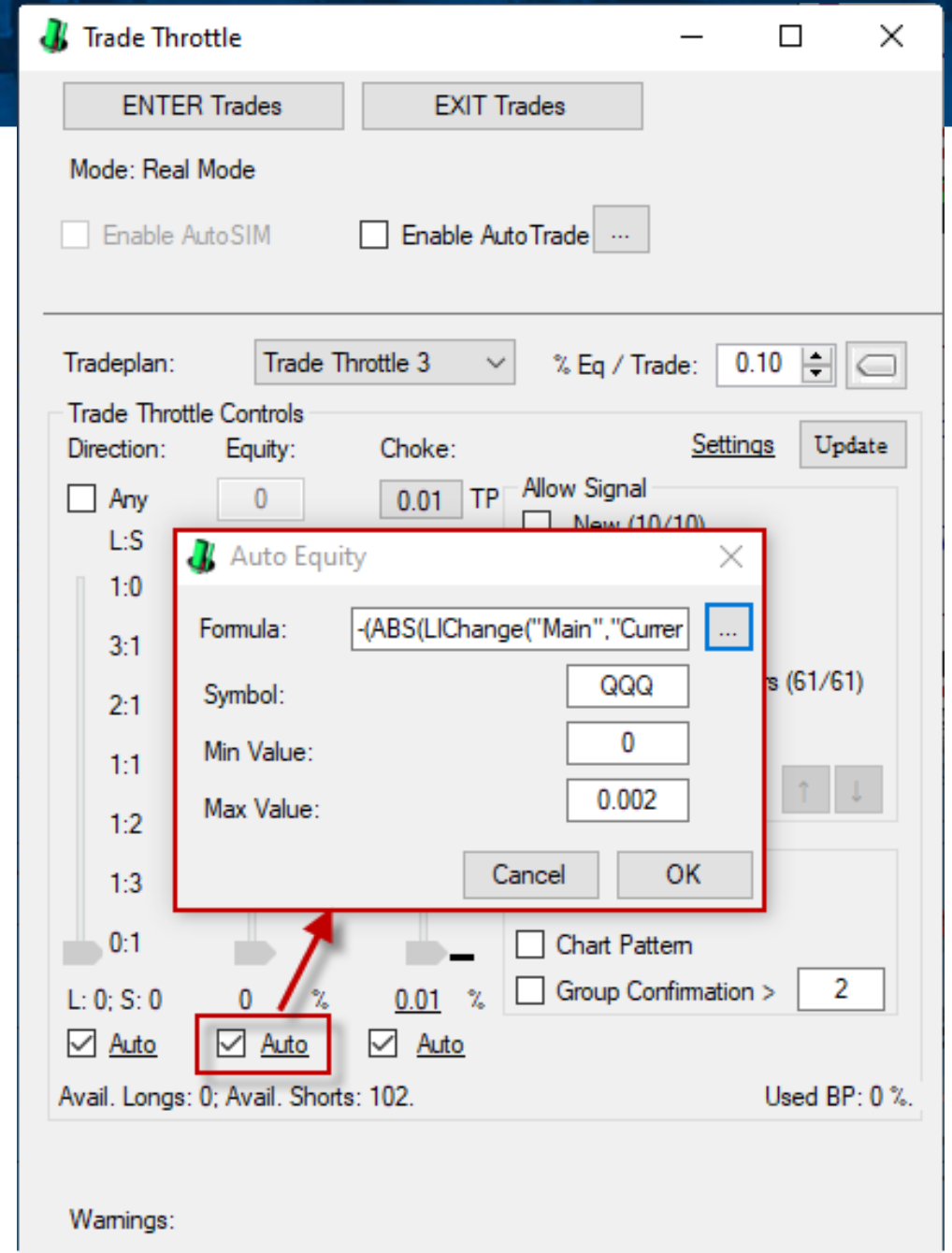


Direction Equity Choke

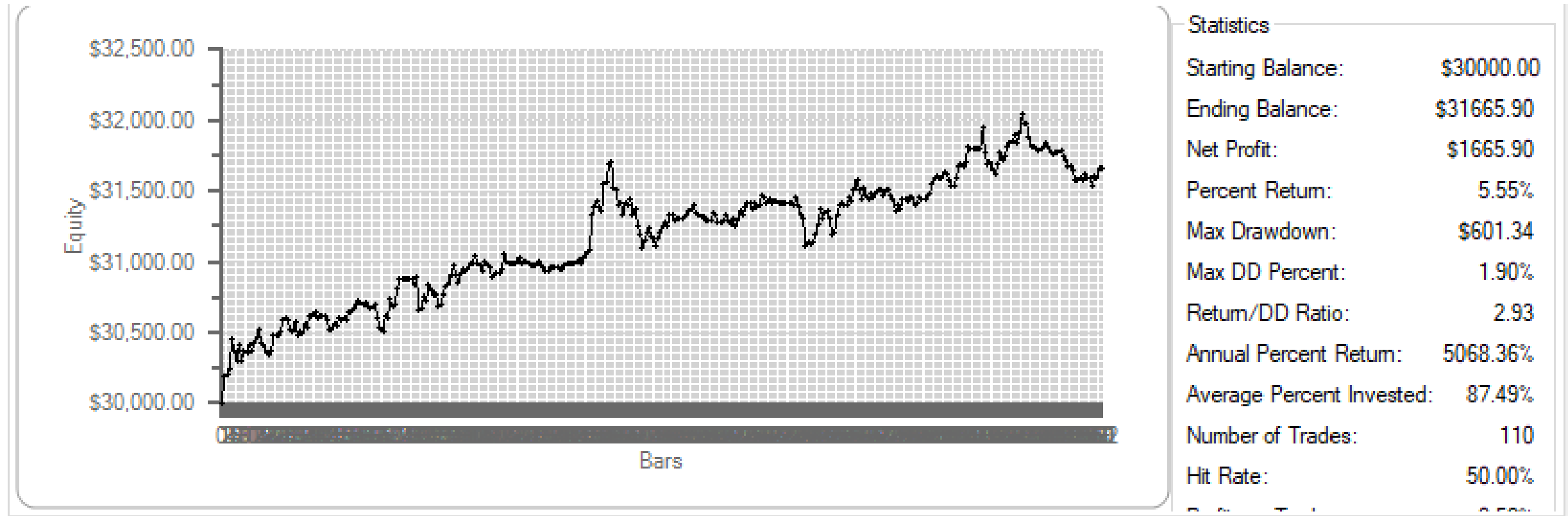
Throttle Automation

We have a Special, non-released feature in the **Trade Throttle** that can AUTOMATICALLY drive the Direction, Equity, and Choke Levers.

These scripts are being used to fully automate Trade Throttle operation.



VT Simulations: IC Throttle One



Throttle Simulation trading Long and Short. The simulation made 5.6% in 5 days, which is a 5,000% annualized return.

Seeing it in Action


Let's take a look at how VisualTrader can be used to automatically trade the market each day.



Member News

Throttle Research and other News has been carefully documented for all Inner Circle Members in the **News and Information** tab of the Inner Circle site.

Updates are made weekly.



[WELCOME](#) [INSTRUCTIONS](#) [NEWS AND INFORMATION](#)

News And Information

Tuesday 3/1/2022:
Execution Price Comparison


Inner Circle Members;

It looks like the market has transitioned to a 'wait and see' posture with everything going on in the world and the uncertainty surrounding it. As a result, I decided to spend the past few days working on ways to handle sideways markets in the Throttle.

I expect to finish this work quickly. But another very important item on my list has been to make sure the prices we are seeing in Collective 2 are reasonably close to execution prices received from I.B. - for short trades.

I was going to buy Puts on QQQ but it's better to short stocks when the market is falling because individual stocks can fall faster. So just before the Close, I did a Throttle Trade on 8 stocks, holding the positions about 20 minutes before closing them. I then compared execution prices between C2 and IB. As I show in the video, the two were very close on these trades, which is good. I also discuss what I have been working on, as well as my plan to deploy Throttle One in C2.

Ed Downs



[Click Here](#) to watch the video

Report: C2 vs. IB Executions

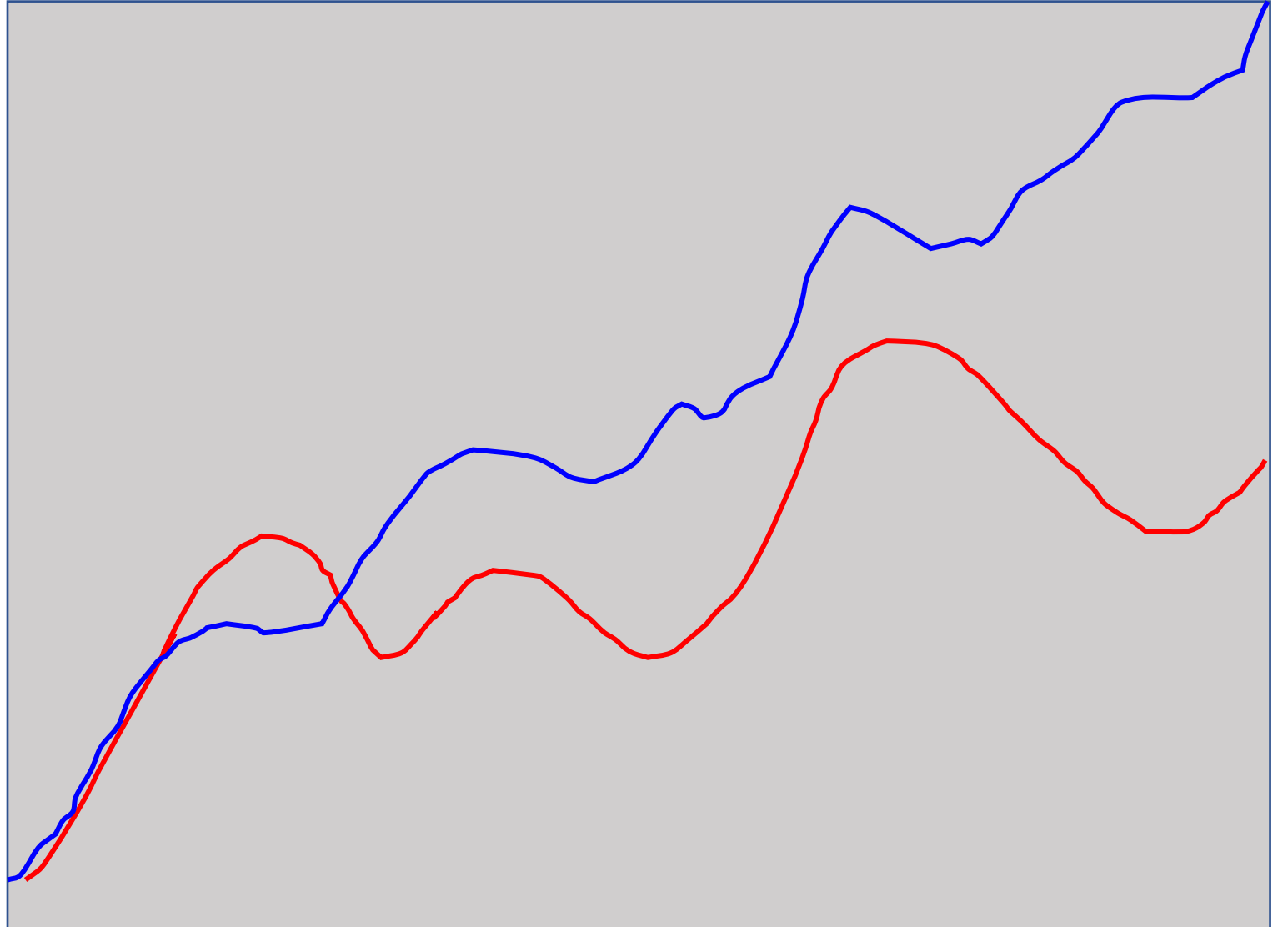


Our Trading Approach

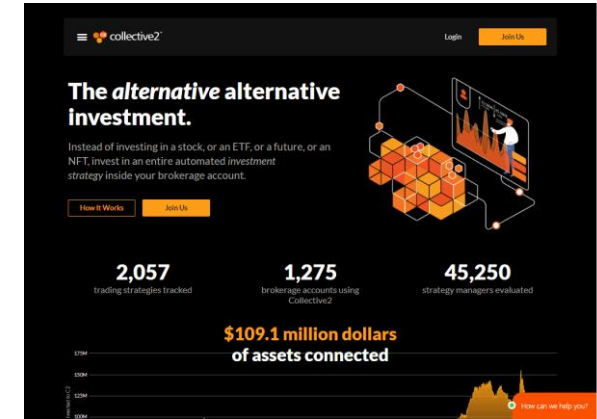
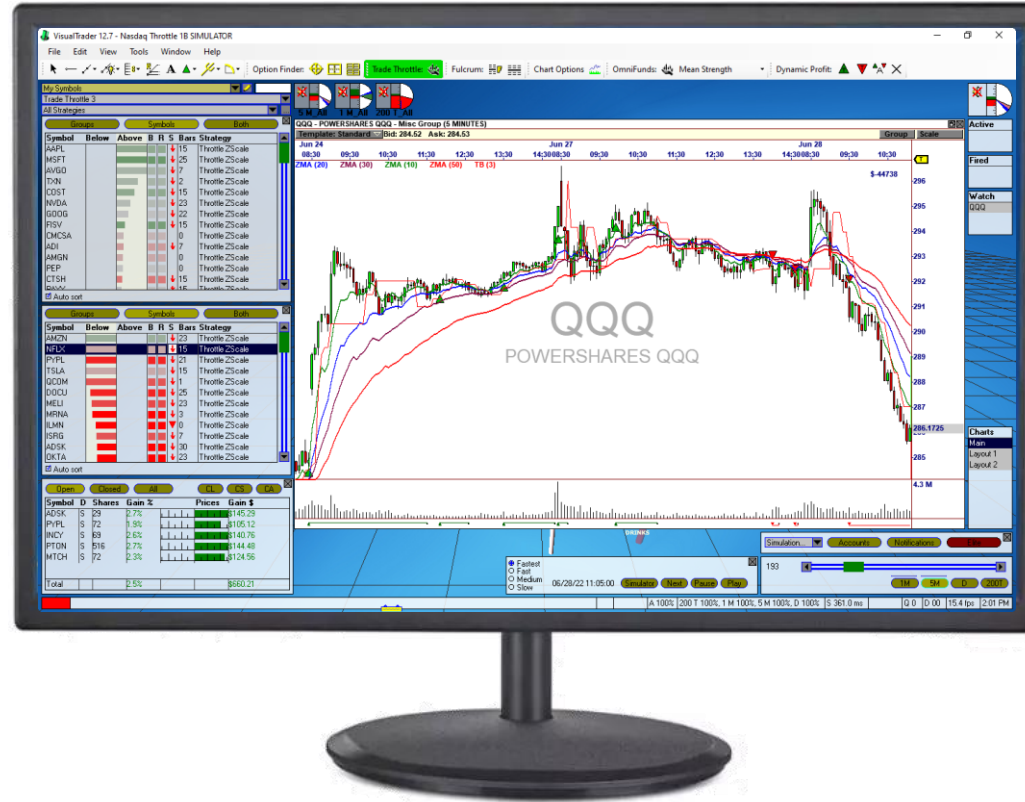
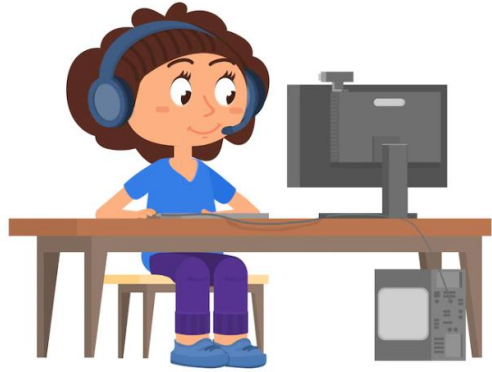
Trading for Consistent Gains

Many Strategies can make money over time if draw downs are not a concern.

In **The Inner Circle**, we **Only** deploy Strategies that have shown the ability to makes consistent gains over shorter time periods with low draw downs.



Monitored Trading



Collective2.com

All Trading Machines and C2 Connections are closely monitored during trading hours by the Nirvana Team.

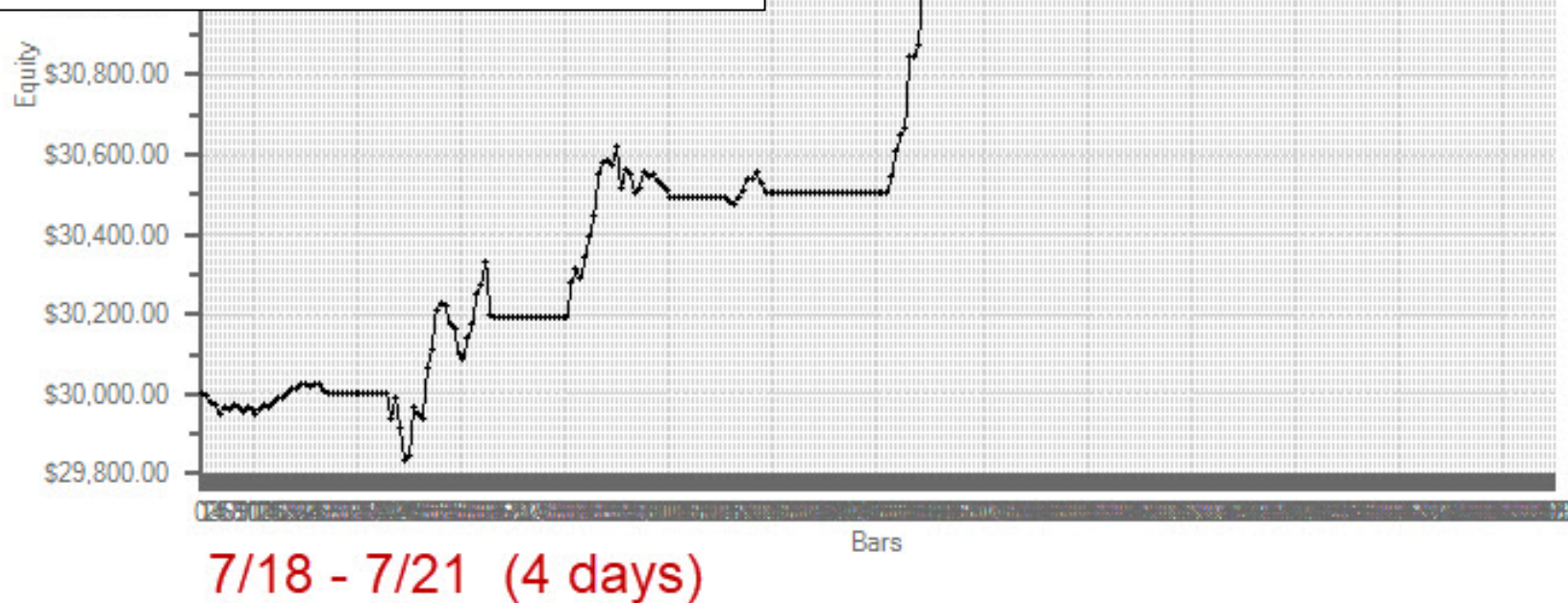


Equities Trading

IC Throttle One

Simulation from last week.

Working to improve profits during sideways periods.



Statistics

Starting Balance:	\$30000.00
Ending Balance:	\$31310.70
Net Profit:	\$1310.70
Percent Return:	4.37%
Max Drawdown:	\$426.55
Max DD Percent:	1.35%
Return/DD Ratio:	3.24
Annual Percent Return:	4850.53%
Average Percent Invested:	30.00%
Number of Trades:	26
Hit Rate:	53.85%
Profit per Trade:	0.51%

X Axis

☐ Date

☒ Bars

IC FAANG

The Strategy was designed to trade Breakouts on the FAANG* stocks near the Open, as shown here.

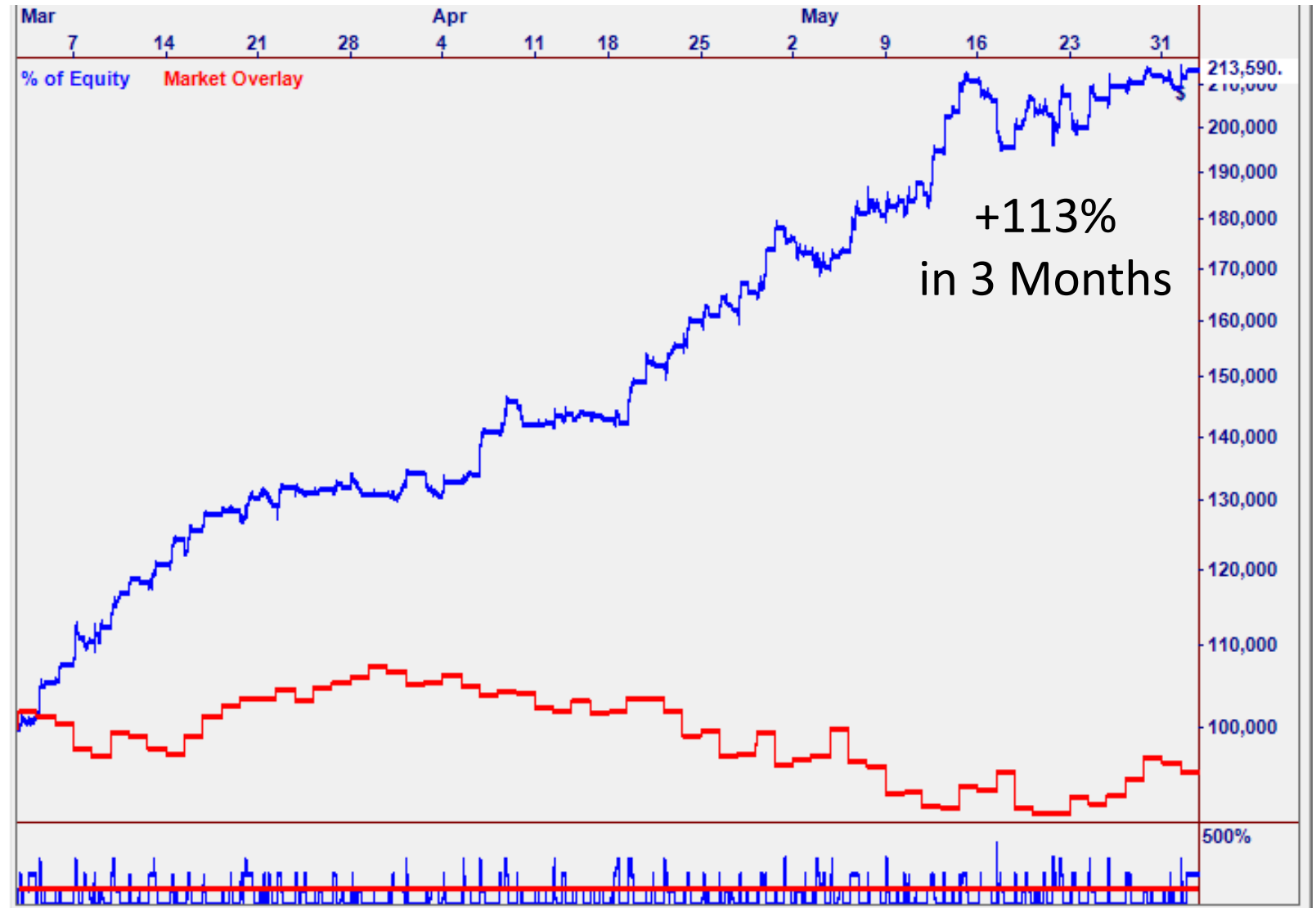
* FB (META), AMZN, AAPL, NFLX, GOOG



IC FAANG

Simulation on the FAANG stocks only. Performance vs. the Market is very good.

We are adding more liquid stocks to smooth the equity curve. The new Strategy will be called **IC Equity Breakouts**.





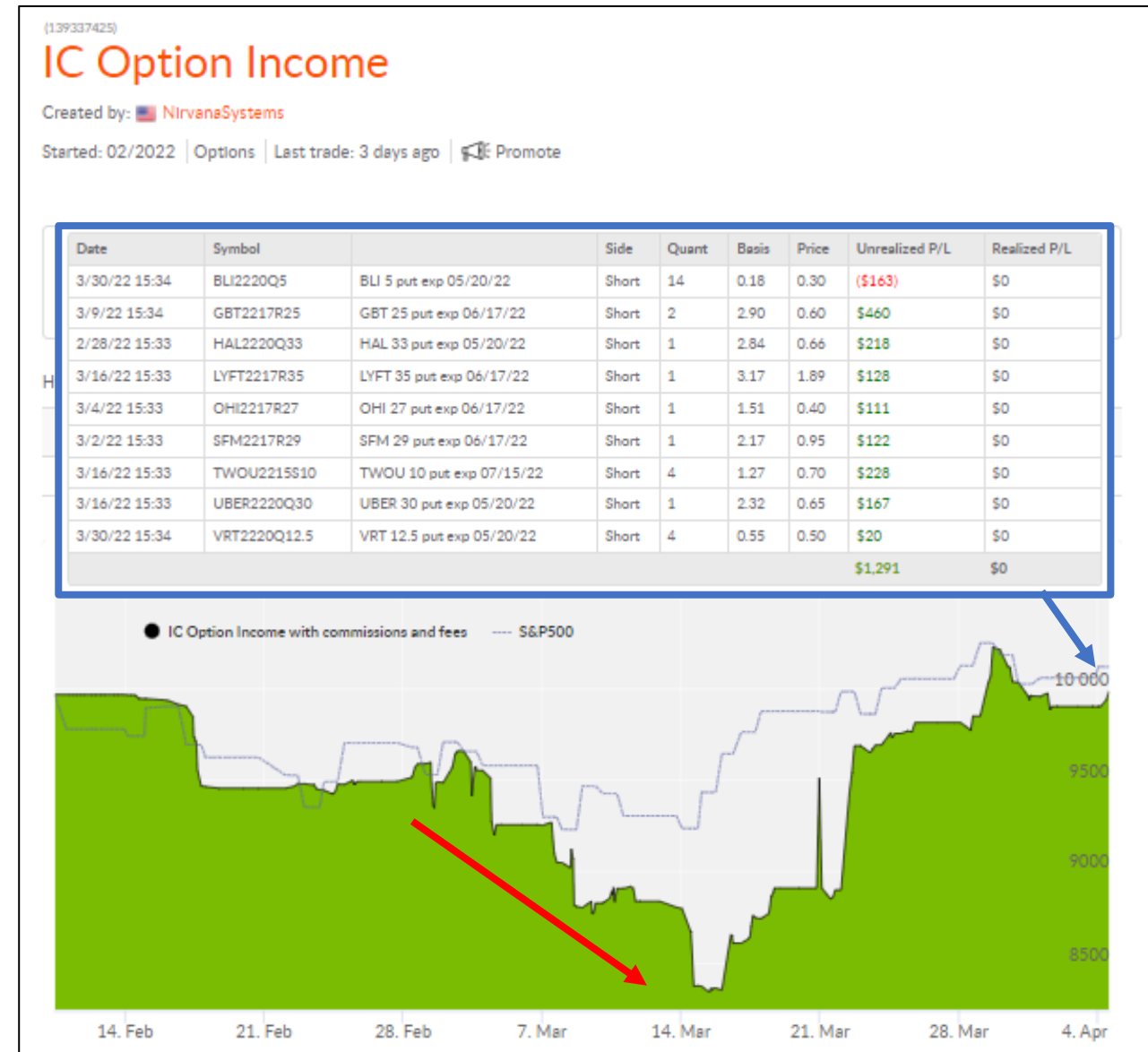
Options Trading

The First “IC Option Income” Strategy

The first version of this Strategy sold Naked Puts ONLY.

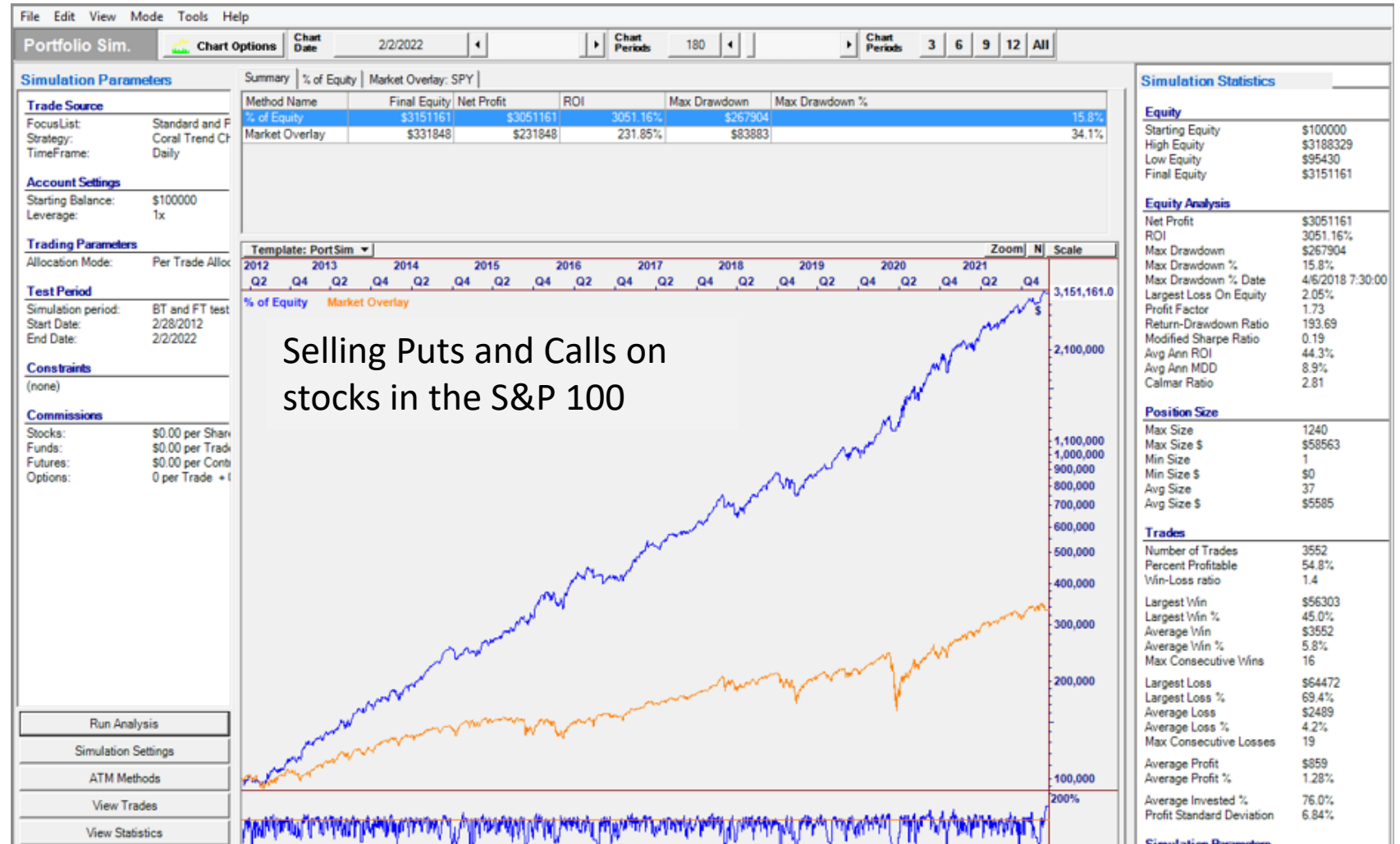
Selling Puts works well in sideways to bullish markets. However, the market corrected shortly after release (Feb 14).

Put-Selling then generated income as the Strategy rallied from the March Low to get back to starting balance.



IC Option Income (2)

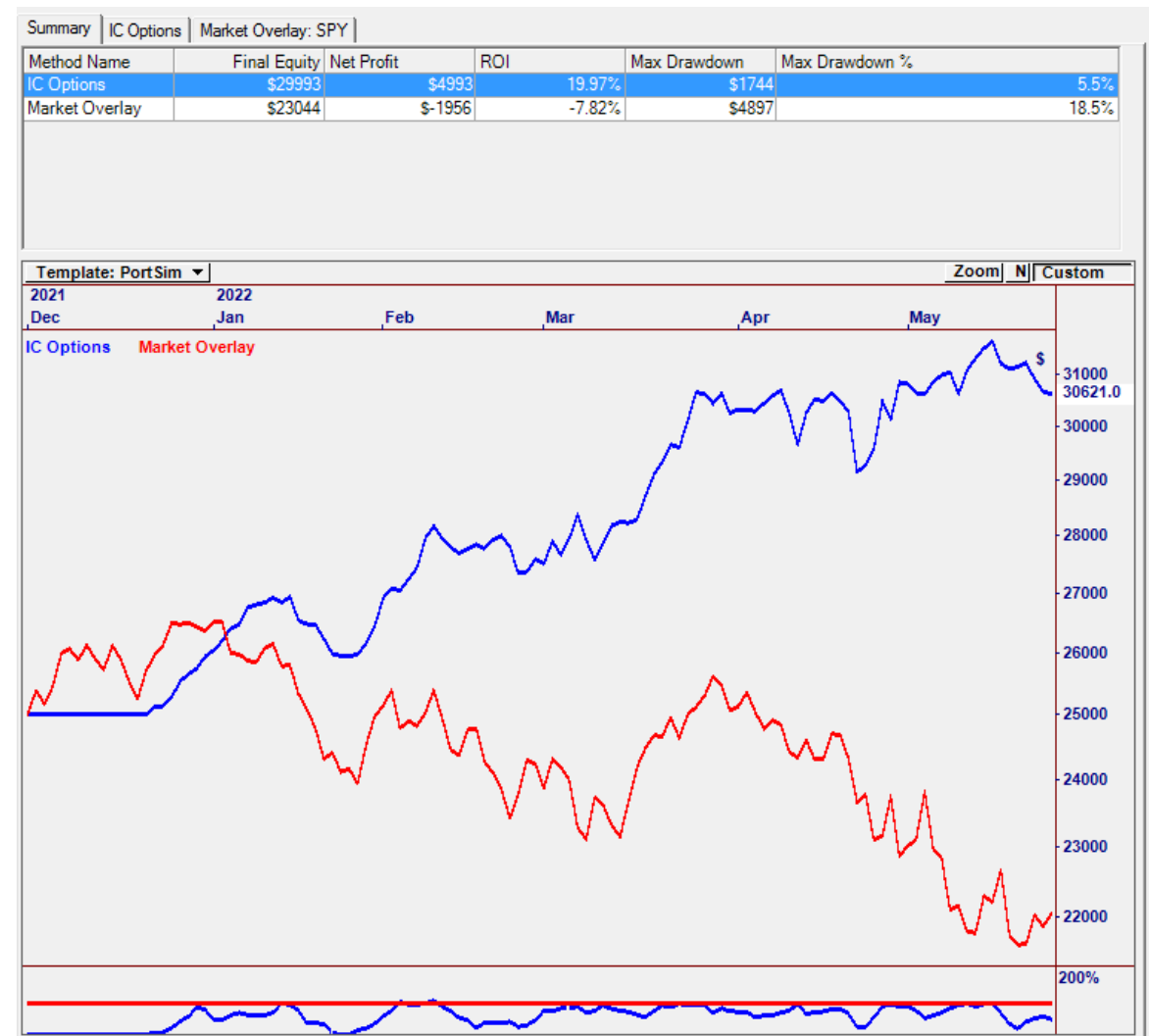
- Operates under **ATM Control** using Bullish/Bearish Market States.
- Sells Puts **AND Calls** on stocks in the S&P 100 depending on Market State
- Very Steady Curve with 44% Annual Return on margin.



IC Option Income (2) Performance

6-Month Simulation

- Up over 20% Jan-May '22
- The Market was DOWN over 12% in the same period.

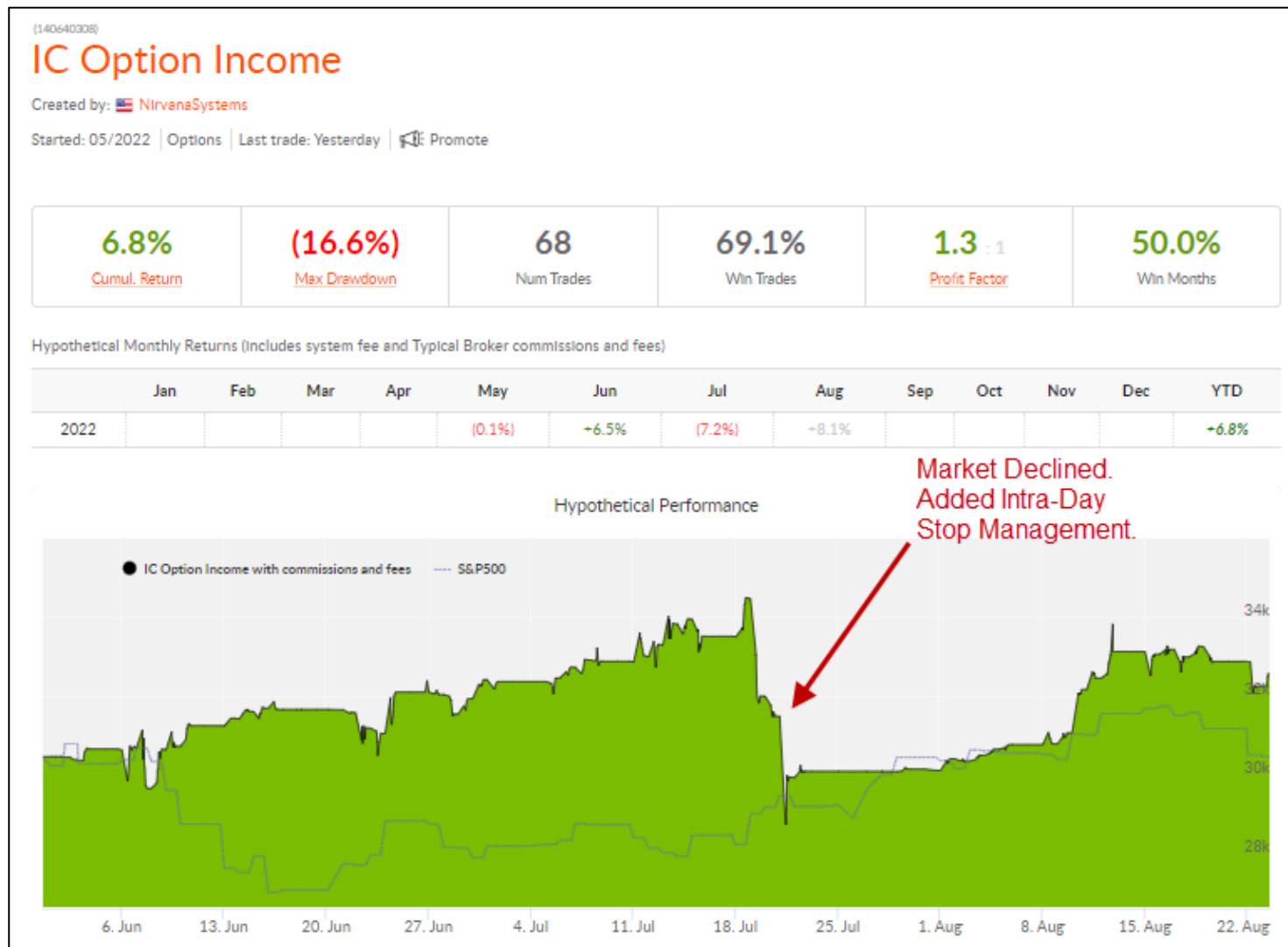


2022 Performance Simulation (6/1/22).

IC Option Income (2) - Improvements

We saw very smooth appreciation until the market corrected. The draw down was caused by waiting to cover the Puts at the next Open.

We added **Intra-Day Monitoring** to exit during the session based on the underlier.





Futures Trading

Crude Oil (CL)

Deployed at the end of March. Trades the standard CL Contract.

Up 27.6%+ since launch.


The Strategy was changed to **reduce draw downs**, which resulted in lower performance.

So, Jeff worked to improve it...

(139892468)

IC CL All Sessions

Created by:  Nirvana Systems

Started: 03/2022 | Futures | Last trade: Today |  Promote

27.6%

Cumul. Return

(7.7%)

Max Drawdown

202

Num Trades

54.0%

Win Trades

1.4 : 1

Profit Factor

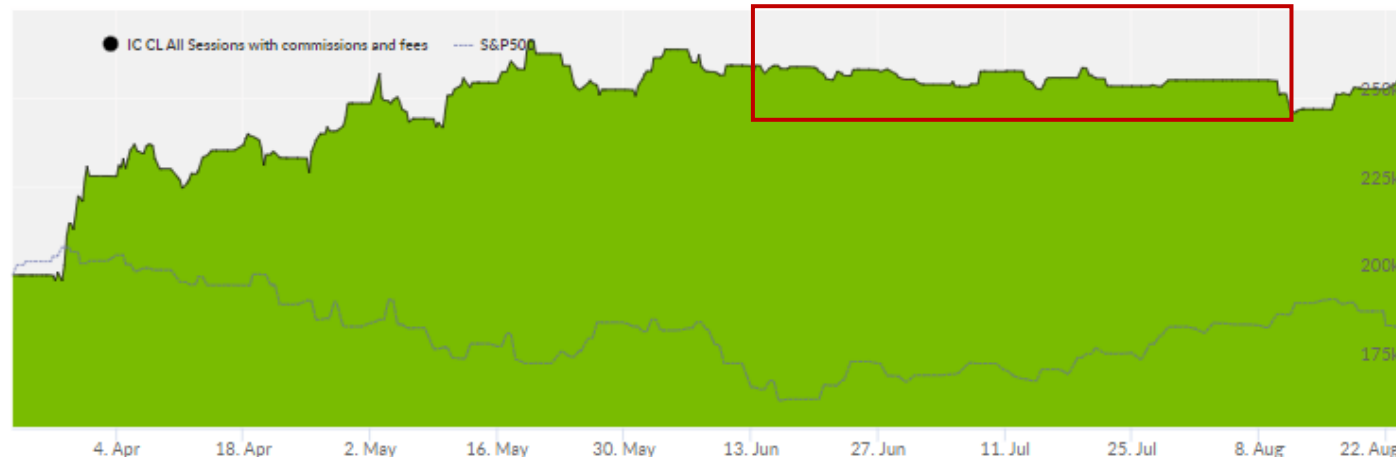
50.0%

Win Months

Hypothetical Monthly Returns (Includes system fee and Typical Broker commissions and fees)

	Jan	Feb	Mar	Apr	May	Jun	Jul	Aug	Sep	Oct	Nov	Dec	YTD
2022			+14.0%	+9.0%	+2.8%	-	(0.1%)	-					+27.6%

Hypothetical Performance

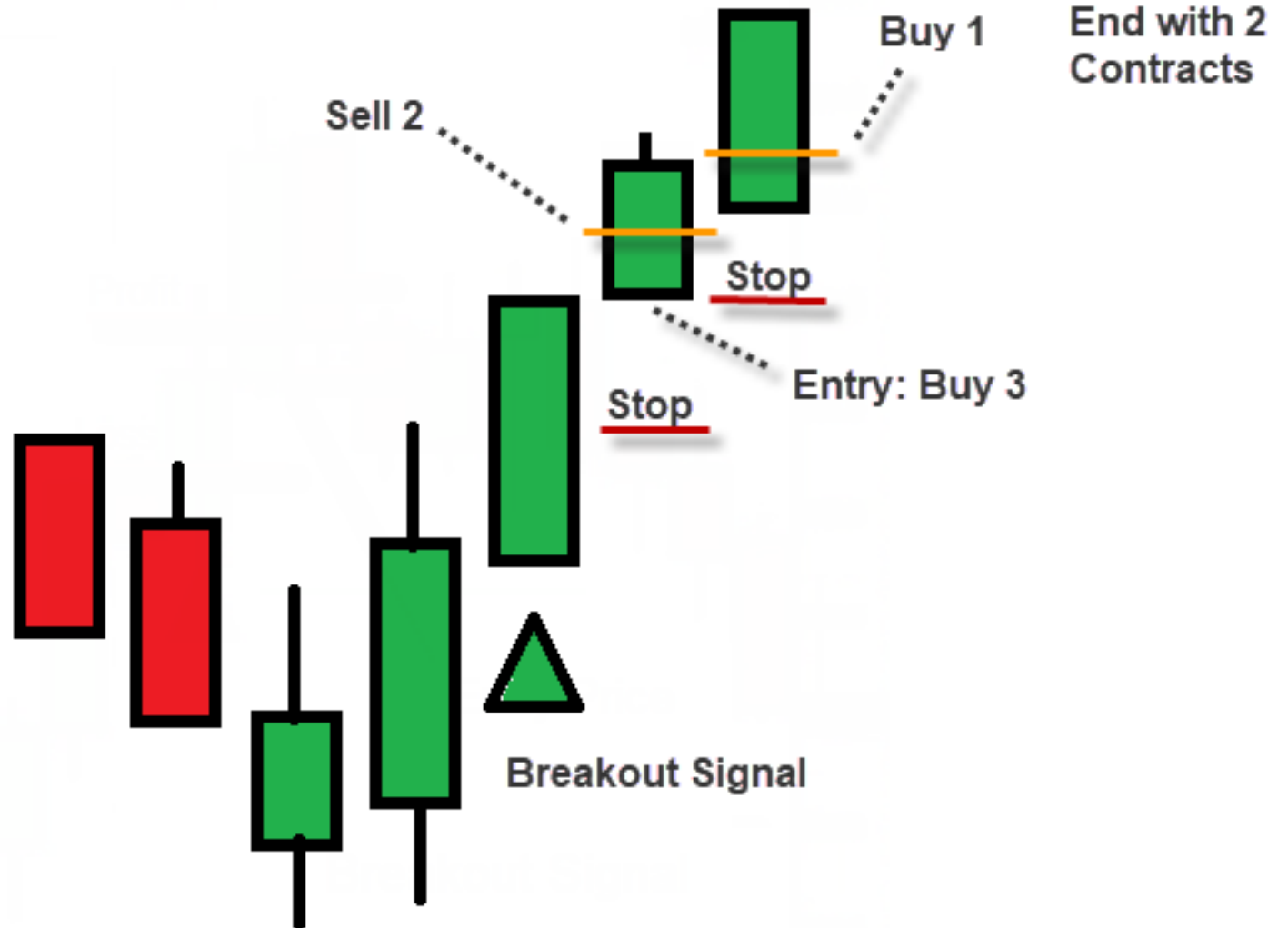


As of 8/23/22

Trade Plan Advancements

Jeff has been testing a new Trade Plan concept that generates a higher probability of a winning trade.

“Buy 3, Sell 2, Buy 1” avoids draw downs while staying in-trade to catch the runners.



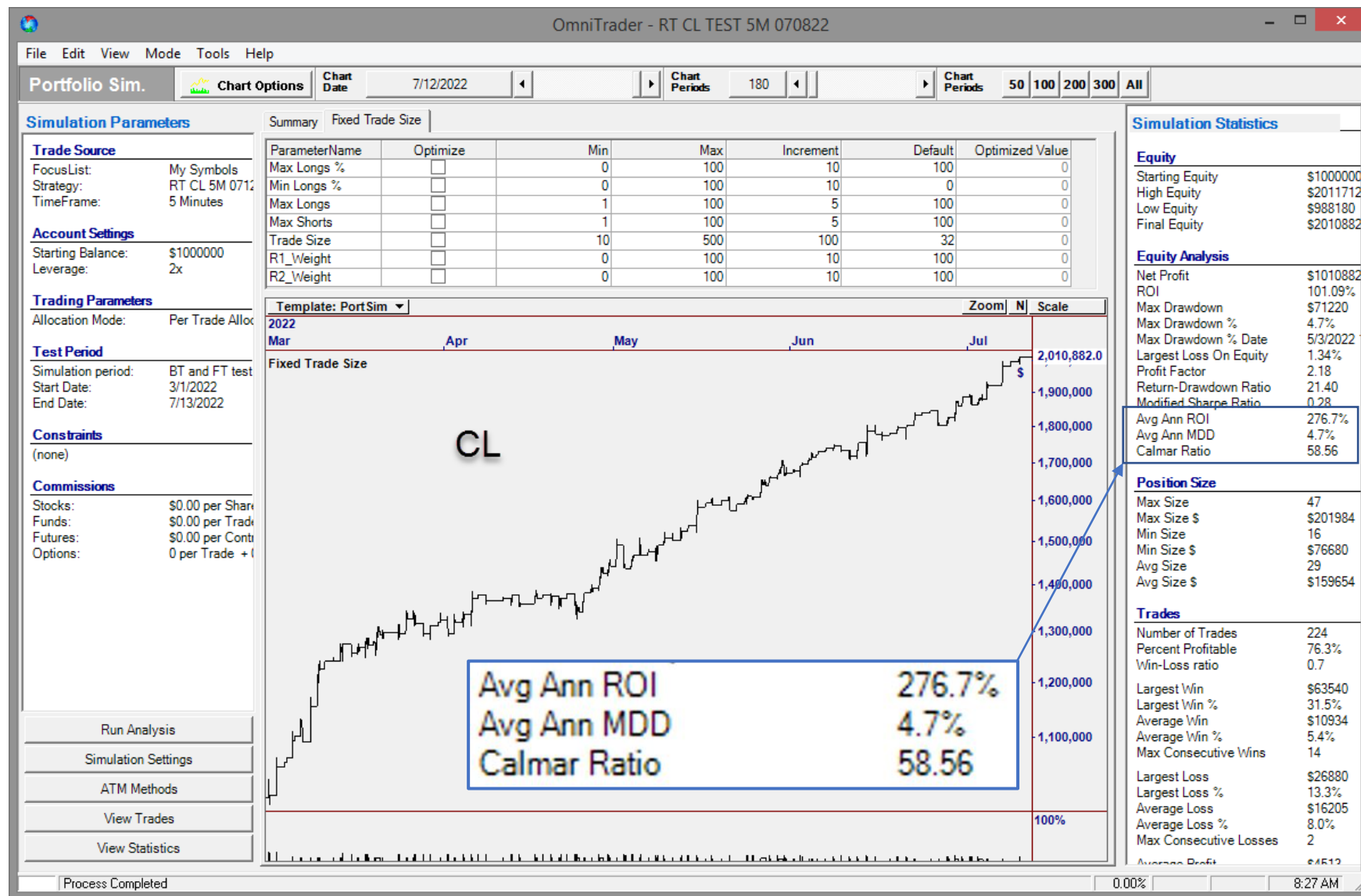
Crude Oil (CL) – Using the New Trade Plan

Recent tests produced the equity curve shown here.

We are waiting for our programmer to make an important fix to Trade Plans.

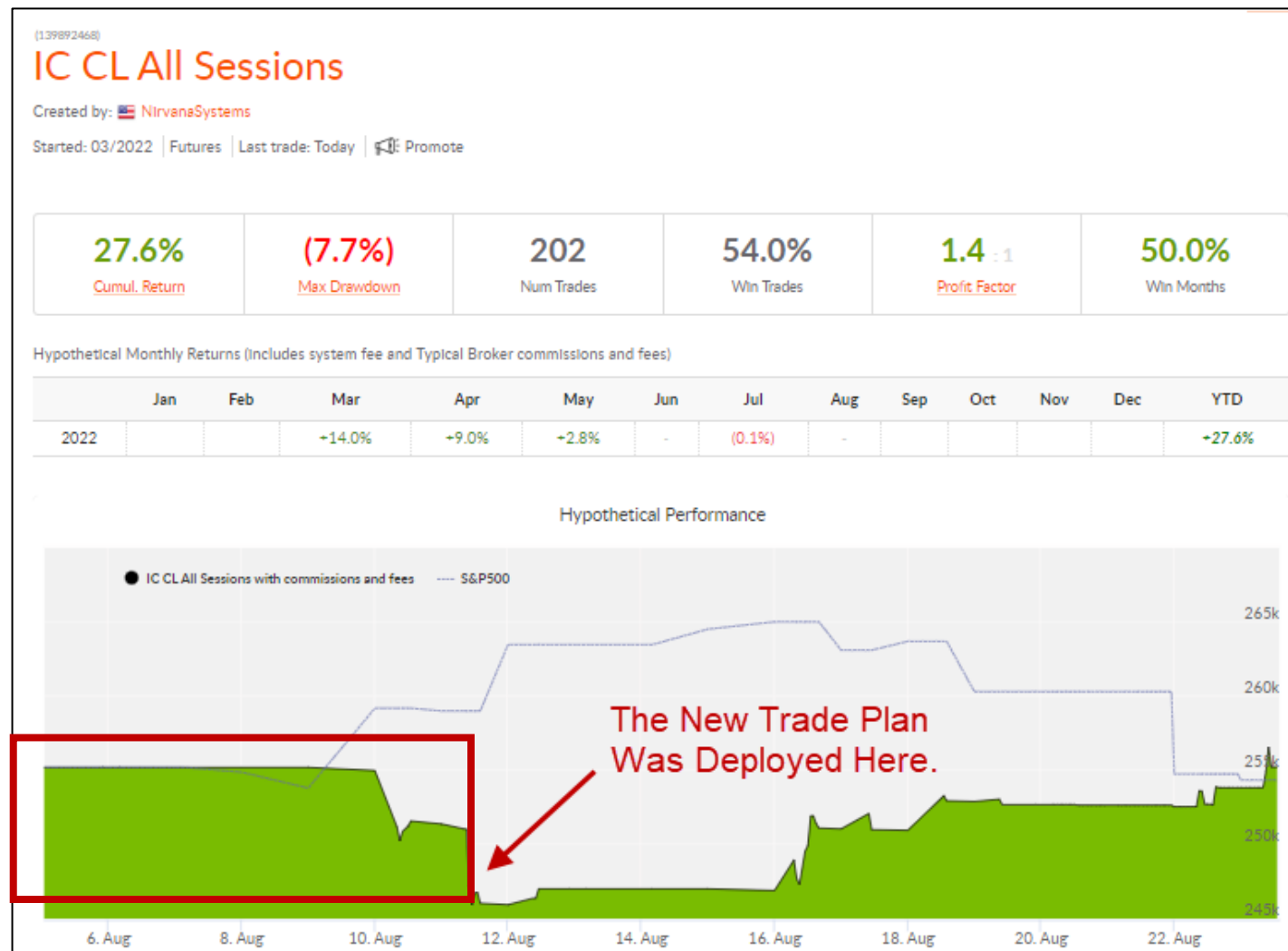
When deployed, this Strategy will trade 3 contracts.

Notice will be provided.



Crude Oil (CL) New Trade Plan Deployed

The CL Strategy has seen improved performance since the new Trade Plan was deployed in C2.



As of 8/23/22

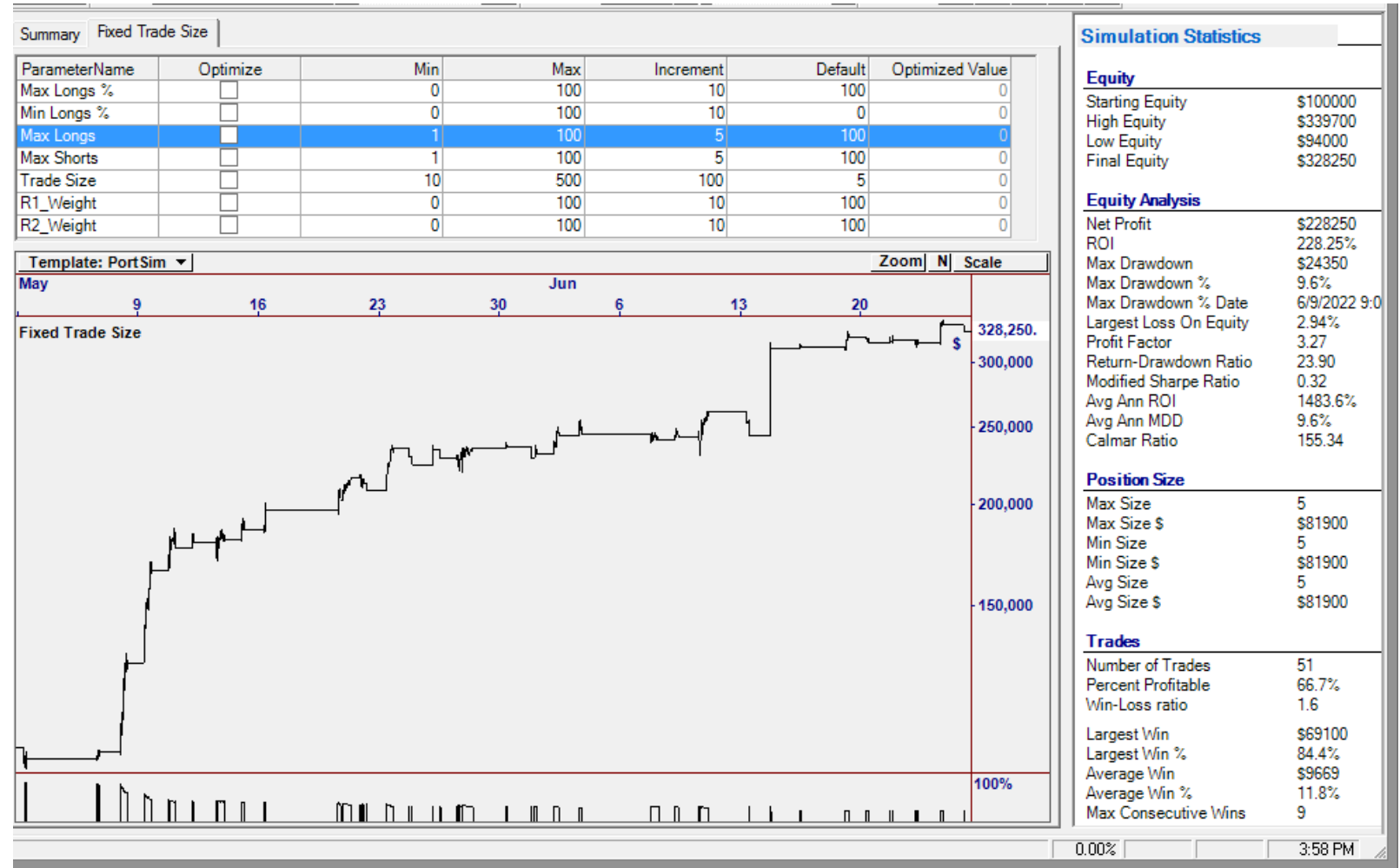
Natural Gas (NG)

Simulation shows a 200% gain in the past 2 months.

Calmar Ratio: 150

Notice that it is generally flat until a move occurs.

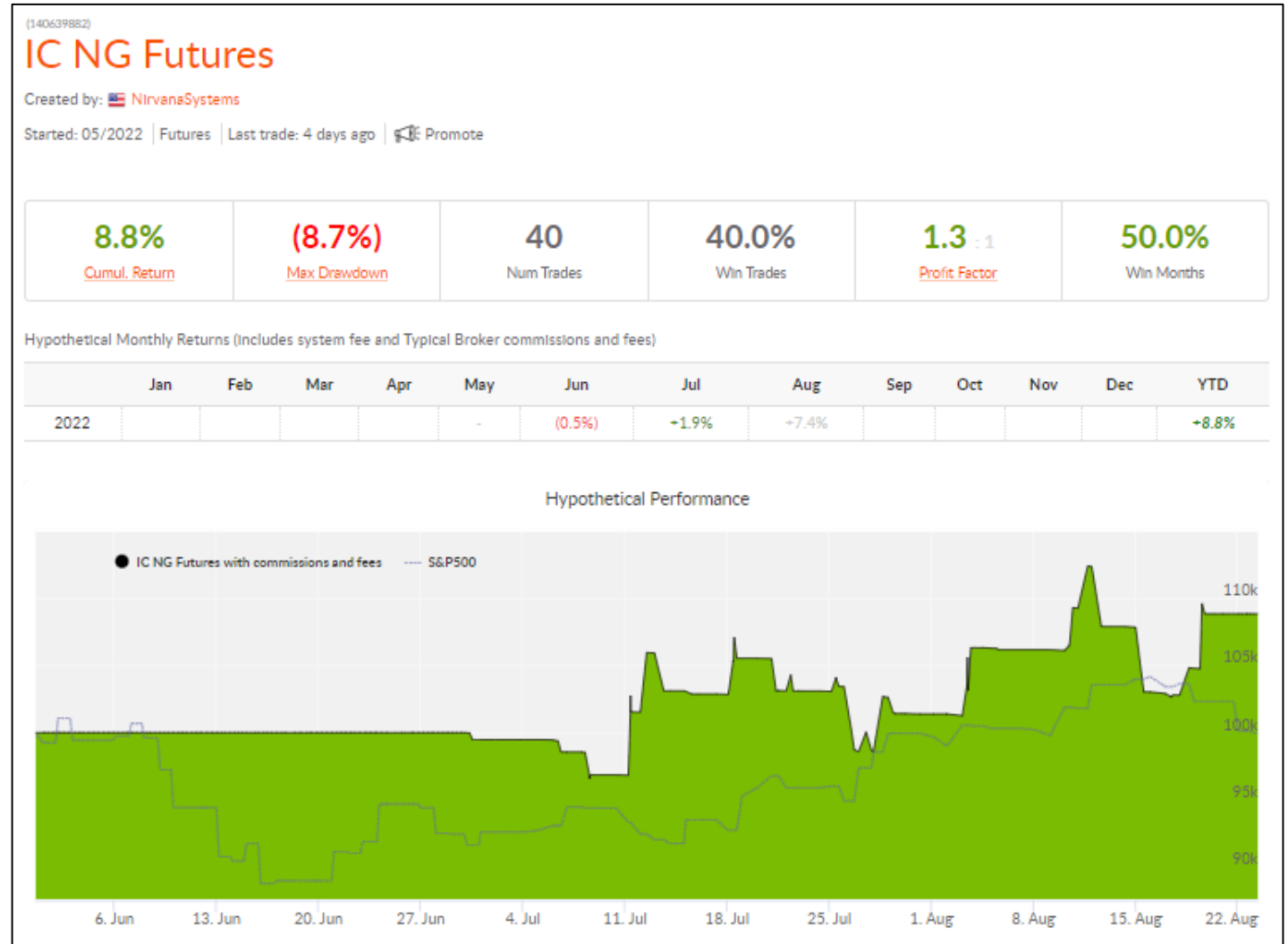
Now Live on C2.



IC NG deployed July 1

NG is performing like the simulation, with sudden moves after flat periods.

IC NG was deployed July 1 and is now up nearly 9%.



As of 8/23/22



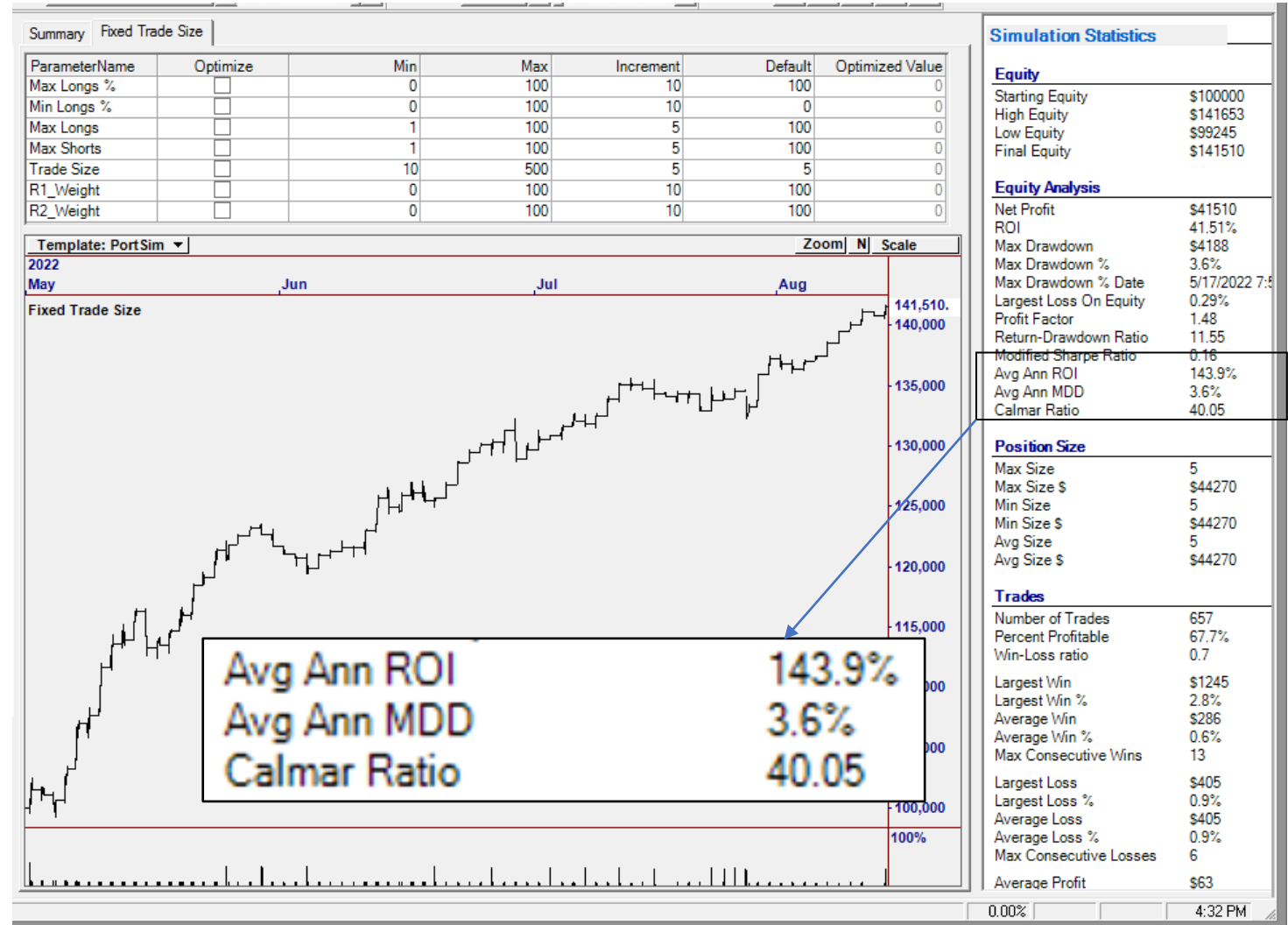
NEW Index Futures Strategies

IC RTY Breakouts

The Same Stop Method was applied to the Russell 2000 e-mini contract.

Dropped from 5 Minutes to 2 Minutes to more quickly engage the breakout impulse and added a Trending Strategy.

IC Russell shows consistent gains while avoiding excessive drawdowns.



Simulation include sExchange Fees and Commissions



Inner Circle Goals

Our Inner Circle Goal

Our goal is to be able to eventually trade up to \$25 Million using intraday trading approaches.

- **Trading in Real Time** offers Less Risk – In at Open, Out at Close
- We take advantage of the Movement of **Strong/Weak Stocks** and **Futures** during trading hours.

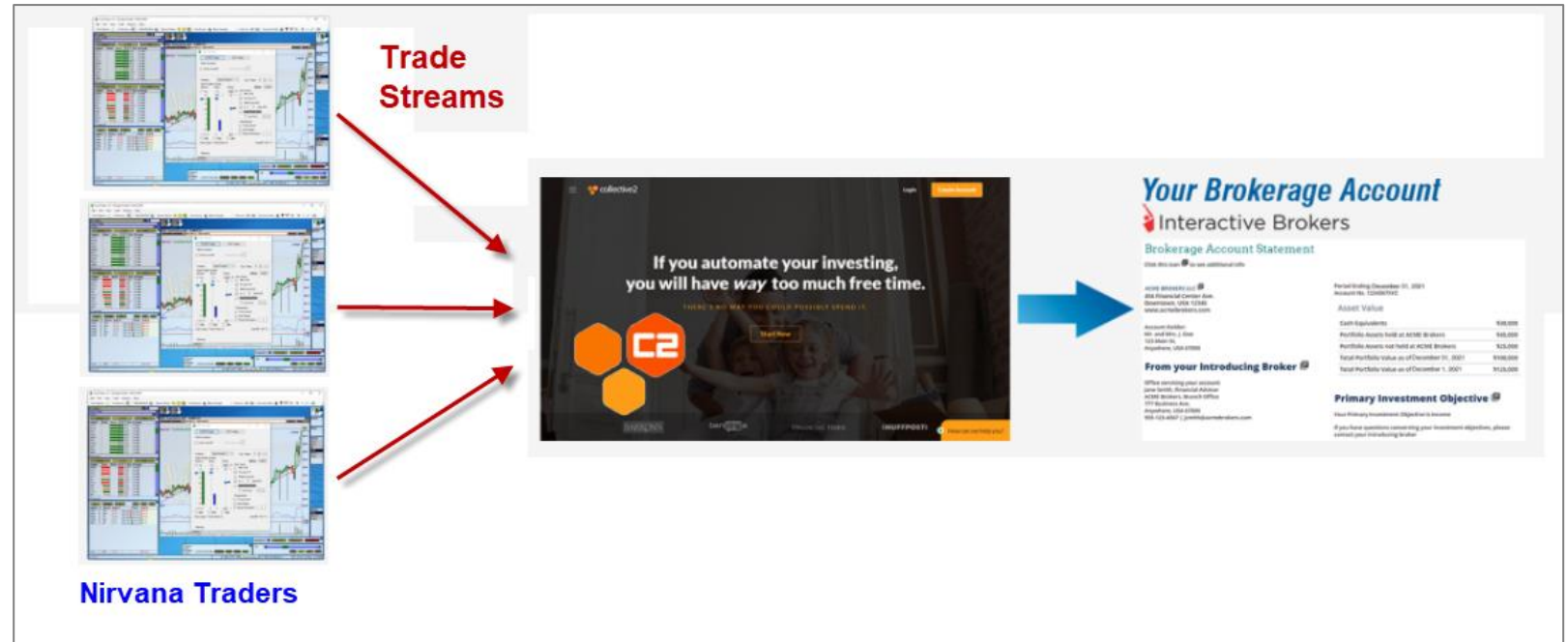


A good example of risk in overnight markets is the recent overnight volatility.

Replication

Most Equities Strategies (like Throttle) can extend to other Indexes or ETFs with Industry Group Components.

The plan is to develop multiple automations on different markets to create multiple Trade Streams for Collective 2.





Joining the Inner Circle

A Very Special, Limited Offer

When we first created **The Inner Circle**, we set a price of \$25,000 per Seat, which is low if our success continues.

We have decided to bring on 5 additional Members, and have set the price to \$10k this week to facilitate this goal.

The screenshot displays the NirvanaSystems website with a dark blue header. The main navigation bar includes links for STORE, TRADING TECH, INVESTING TECH, RECENT VIDEOS, TRAINING, and ABOUT US. The central banner features the 'The Inner Circle' logo. Below the banner, a testimonial from Ed Downs is shown, followed by a section titled 'What is the Inner Circle?' which lists four points: 'It isn't Software.', 'It isn't Data.', 'It isn't Education.', and 'It isn't a Product at all.' The page also includes a 'Funding Instructions' section with details on wire transfers and credit card transactions. A large blue diagonal banner in the top right corner of the screenshot reads 'Save \$300'.

NirvanaSystems YOUR PATH TO TRADING SUCCESS STARTS HERE

STORE TRADING TECH INVESTING TECH RECENT VIDEOS TRAINING ABOUT US

The Inner Circle

"I am personally engaging the Market every day and inviting YOU to participate with me."
- Ed Downs

I am very excited to announce our Inner Circle initiative. It isn't like anything before. The best thing is it sets us up to seek trading profits as our highest priority. We will both fund the future and advance our trading technology.

What is the Inner Circle?

- It isn't Software.
- It isn't Data.
- It isn't Education.
- It isn't a Product at all.

It IS a Trade Stream → Sent directly to your account at IB - or direct to your bank

Nirvana is currently transitioning from a 100% Software Company to a Software/Trading Company. In return for helping us fund this final stage of this work, we are offering Seats in "The Inner Circle" at a special price. The benefit from the effort.

The Inner Circle provides Trade Streams through Collective 2. While several are planned, the first will be "Throttle One", featuring the VisualTrader Trade Throttle, as described below.

Funding Instructions

Wire Transfers are preferred because there are no credit card fees and they're quicker. But credit card transaction is also fine.

Wire Transfer

Our Bank Name: **PNC**
Our Account Number: **4940580058**

The following are our Domestic Routing Number and International SWIFT Code:

Domestic Routing Number: **043000096** International SWIFT Code: **PNCCUS33**

— OR —

Credit Card Transaction

800-880-0338

Save \$300

www.nirvanasystems.com/inner-circle



www.nirvanasystems.com/inner-circle