

The State Of

NIRVANA

Winter 2016

OmniTrader 2017

Know Precisely...

What to Trade:

Top-Performing Strategies

When to Trade:

Best Signals in the Current Market

How to Trade:

AutoTrade does the Job



PLUS

Set your Strategies
to Trade **Automatically**
with AutoTrade!

Introducing:

**The Connors RSI
Strategy Suite**

25% per year over 20 years!

OmniTrader Users!

NOW... Turbo-Charge Your OmniTrader for Consistent Profits in ANY Market!



Since the first version of OmniTrader was released in 1994, we've continually improved the software AND provided Strategies based on different approaches, including Guppy, Darvas, Money Zone, Elliot Waves (Wave Trader), T3, NSP-41, VBX-3, and many more.

We know that many Trading Systems do not work the same in all markets. The question is, "How do you know which ones to turn on?" To answer this, we must answer the question, "*Which ones are working IN THIS MARKET?*"

The Personality of Markets Theory says that different markets and different securities have different personalities, which means some will work better than others at different times. We just have to identify them.

Automating the Strategy Selection Process

OmniTrader 2017 comes with a New and Improved version of Hot Strategy Finder (HSF) which was originally released in 2007. HSF tests all your Strategies and tells you which ones have performed well in the recent past. We know that using the best recent performers dramatically increases the probability of success!

For this upgrade, we focused on automating this process, but we didn't stop with HSF. Once you know which Strategies to trade, the obvious next step is to "turn them on" and trade them! That's why we developed AutoTrade for OmniTrader.

AutoTrade is a very EASY TO USE automation utility that enables users to trade their selected Strategies, OR use HSF to find the best Strategies and trade them – AUTOMATICALLY.

More Great Features...

We've dramatically improved the charts in this OmniTrader with Indicator Tabs. You can specify that an indicator pane can use tabs, and then add a number of indicators to confirm against.

There are also System Columns in the Focus List, enabling you to activate any System you like and have Signals displayed in the List. And, we've added a new window (OmniView) that provides timely information relevant to OmniTrader users.

Introducing Connors RSI Strategy Suite

A significant component of the OmniTrader 2017 Upgrade Package is the new Connors RSI Strategy Suite, based on the Connors RSI. We combined this important new indicator with other trend-following methods to create a new Strategy called CRT-3 that has generated an average annual profit of 25% since 1996!

We have found that this approach results in vastly superior trading signals, and the result is one of our most profitable strategies ever! Read more on page 6. And of course, when you are ready to trade CRT-3, you can easily do so with OT 2017's AutoTrade!

Delivering Consistent Profits in Any Market

This OmniTrader pulls it all together – Strategies we have created or those you have built with an easy way to trade them and improved charts. I can't think of a better way to start 2017.

Sincerely,



Ed Downs
CEO and Founder



OmniTrader 2017

Know Precisely... **What to Trade, When to Trade, & How to Trade!**

OmniTrader 2017 is the result of several key enhancements that have made it easier than ever before to profit in any market.

Find the Best Strategies

Hot Strategy Finder is the Ultimate Automation for OmniTrader. Even with scores of Strategies enabled, HSF can test all of them to find out how robust they are by virtue of its unique "segmented" design. See page 4 for more details!

Generate the Best Signals

Armed with the best Strategies, OmniTrader 2017 automatically generates great Signals in the Focus List.

Place and Manage the Trades – Automatically!

The new AutoTrade feature can automatically run the entire process and submit great Trades to the Broker every day, including user- specified trade allocations.

- Run Hot Strategy Finder
- Run the ToDo List
- Place the Orders with the Broker
- AND optionally notify you by Email when the process is complete (EOD).

It's the Easiest, most effective Automation for Traders available today!

Strategies		Test Segment Ranking										Cumulative Statistics for All Segments							
Select	Strategy	11	10	9	8	7	6	5	4	3	2	1	NT	NL	NS	HR	PPT	P%	PPT*NT
<input checked="" type="checkbox"/>	T3-S3	0	26.73	32.67	52.26	42.3	20.76	14.72	11.76	24.18	-1.08	-1.8	214	214	0	65.89	1.04	0.34	222.56
<input checked="" type="checkbox"/>	T3-S1	0	72.5	-27.65	77.22	16.64	82.38	0.69	9.66	23.44	23.5	-2.8	292	292	0	70.21	0.96	0.52	280.32
<input checked="" type="checkbox"/>	Swing Trading (Naked Puts)	0	8.24	26.1	0.7	1.5	1.32	21.84	43.16	10.15	2.79	75.5	375	375	0	80.8	0.51	0.73	191.25
<input checked="" type="checkbox"/>	Swing Trading	0	15.72	-35.35		12.54	11.38	73.81	21.2	12.26	-7.54	81	383	383	0	42.82	0.22	-0.3	184.26
<input checked="" type="checkbox"/>	CTX-1	0	6.12	27.28	-7.28	-1.47	2.9	-6.45											
<input checked="" type="checkbox"/>	MS-16	0	-32.76	63.9	75.2	77.22	83.25	-49.56											
<input checked="" type="checkbox"/>	VBK-3	0	10.2	20.02	19.52	55.44	3.36	-7.92											
<input checked="" type="checkbox"/>	RST Trending Strategy	0																	
<input checked="" type="checkbox"/>	Swiss Trading (Credit Spread)	0	-10.62		-14.97	11.76	10.64	18.24											

What to Trade.

Focus List				
Russell 1000 Stocks				
Symbol	Sig	BTHR	BTAP	BTNT
EMC	▲	89	32	9
ES	▲	60	42	10
LNT	▲	69	27	13
BMS	▲	82	73	11
HBI	▼	50	-36	14
VMC	▼	85	121	13
GLNG	▼	50	23	14
GRA	▼	82	98	11
CLX	▲	50	29	12
AEE	▲	64	17	14
EMV	▲	50	14	14

When to Trade.

AutoTrade Settings

AutoTrade

Max Percent Equity:

Trade Size: \$ %

Round to shares/contracts

Tradeplan:

Hot Strategy Finder

Run Hot Strategy Finder

Every Next Run: 12/5

EOD Trade Settings

Run To Do List:

Submit Orders:

How to Trade.

Broker

(Or Paper Trade until you're ready)

Introducing OmniView

OmniView is a new window in OmniTrader 2017 that is updated daily to highlight the top performers from our vast Strategy library, daily articles on the best Signals and other educational topics of interest to OmniTrader users. Read all about it on page 10.

Market View

US INDEXES	Symbol	Last	Change	%
\$SPX	2142.47	+15.97	+0.75%	
\$DJI	18180.74	+94.34	+0.52%	
\$COMP	5288.50	+58.67	+1.13%	

US SECTORS

Sector	Symbol	Change	%
Materials	XLB	+15.97	+0.75%
Technology	XLK	+15.97	+0.75%
Utilities	XLU	+15.97	+0.75%
Financial	XLF	+15.97	+0.75%
Energy	XLE	+15.97	+0.75%
Real Estate	XLRE	+15.97	+0.75%
Industrials	XLI	+15.97	+0.75%
Consumers	XLP	+15.97	+0.75%
Healthcare	XLV	+15.97	+0.75%
Oil	USO	+15.97	+0.75%

Daily Signals

11/23/2016

- KOM** - Exxon Mobile - Consolidation Break consistent with oil sector patterns indicate.
- IBM** - International Bus. Mach. Money Zone signal near earnings offers great buy opport.

10/17/2016

- GLD** - Gold Tracking ET - Sucer bottom detected on O.D. implies higher prices a/c.

Nirvana Blog

The Market and Swing Trading - Market Modes & Market Analysis
Posted 11/22/2016

How Artificial Intelligence Revolutionized Trading
Posted 11/21/2016 5:50pm

Finding the Best Swing Trading Candidates
Posted 11/20/2016 2:30pm

Top Strategies

Strategy	Hit Rate	PPT
XLS-29	75%	1.8%
NOP-41	72%	1.3%
Murst	68%	6.8%
ITLB2	67%	4.5%
QPS Trend	65%	6.2%

News

ITLB 3.0
Multiple Levels Analysis

Find Reversals FASTER and Earlier Than Ever!
Learn MORE

'Take YOUR Trading to the Next Level with OmniTrader 2017.' – Ed Downs

Hot Strategy Finder:

Which Strategies are working now?

RECENT Strategy Performance is the Key to Success.

Wouldn't it be great if OmniTrader could test ALL the Strategies you are interested in, and rank them according to performance and consistency?

This powerful tool was first prototyped by Nirvana Club Member Alan Faris. After seeing Alan's work, Club Members energetically encouraged us to add the concept to OmniTrader.

How It Works

Just activate the Strategies you want tested. Hot Strategy Finder will then generate performance statistics for each one. It also generates a series of "time slices" that show how consistently each Strategy has worked over time.

Using this information, Hot Strategy Finder automatically brings the best Strategies to the top of the list. Just tell HSF to activate the best performers and you're ready to trade the best Strategies that are working in the current market!

Using AutoTrade in OmniTrader 2017, we can have the Strategies identified by HSF automatically activated (See AutoTrade, next).



Alan Faris

"I'm convinced there is Gold right under our feet."

'Ed, We've talked about software which can scan all our Strategies and measure performance at the last two company meetings. I've finished my implementation which I would like to share. While mine works, I believe Nirvana could do a better job and the results would be available for all to enjoy. I'm convinced there is Gold right under our feet.' - Alan Faris

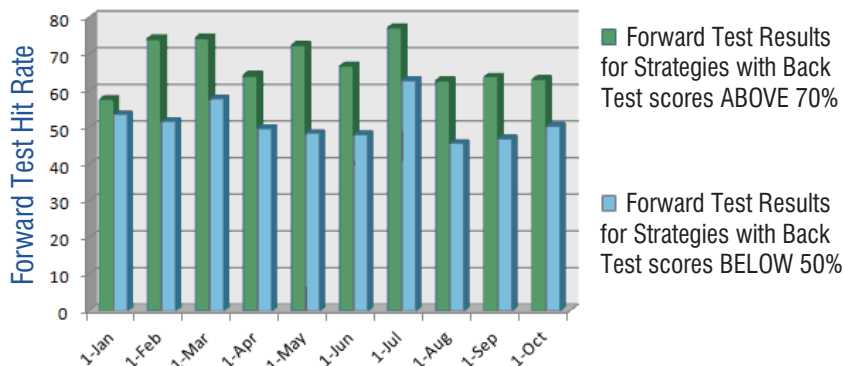
Hot Strategy Finder

Find the Best Strategies - for THIS Market - Automatically!

Strategies		Test Segment Ranking										Cumulative Statistics for All Segments							
Select	Strategy	11	10	9	8	7	6	5	4	3	2	1	NT	NL	NS	HR	PPT	P%	PPT*NT
<input checked="" type="checkbox"/>	T3-S3	0	26.73	32.67	52.25	42.3	20.76	14.72	11.76	24.18	-1.08	-1.8	214	214	0	65.89	1.04	0.34	222.56
<input checked="" type="checkbox"/>	T3-S1	0	72.5	-27.69	77.22	16.64	52.99	0.69	9.66	29.44	23.5	-2.8	292	292	0	70.21	0.96	0.52	280.32
<input checked="" type="checkbox"/>	Swing Trading (Naked Puts)	0	3.24	26.1	0.7	1.5	1.32	21.84	49.16	10.16	2.79	26.1	375	375	0	80.8	0.51	0.73	191.25
<input checked="" type="checkbox"/>	Swing Trading	0	10.99	-35.33	12.54	11.38	33.24	33.1	12.25	-7.54	35.1	383	383	0	42.82	0.22	-0.3	84.26	
<input checked="" type="checkbox"/>	CTX-1	0	6.12	27.28	-7.28	-1.47	2.9	-6.46	67.6	33.44	2.58	-1.77	298	298	0	63.09	0.45	0.25	134.1
<input checked="" type="checkbox"/>	MS-16	0	-32.76	67.4	75.2	52.28	31.21	-49.56	4.76	10.42	33.2	0	1044	1044	0	61.69	0.32	0.14	334.08
<input checked="" type="checkbox"/>	VBK-3	0	10.2	20.02	19.52	55.44	3.35	-7.52	44.64	3.36	-65.78	2.2	388	206	182	59.79	0.22	0.24	85.36
<input checked="" type="checkbox"/>	RSI Trending Strategy	0	-18.62	-49.27	11.78	68.68	68.6	67.91	-37.34	69.48	69.91	211	211	0	35.55	-1.25	-0.69	-263.75	
<input checked="" type="checkbox"/>	Swinn Trading (Credit Spread)	0											375	375	0	77	0.11	1.3	41.75

Hot Strategy Finder can test all your Strategies, segmenting the analysis and color-coding the results. This helps you understand how consistently your Strategies have performed over time. The Strategy list is automatically sorted to bring the best performers to the top, which can then be activated to generate today's Signals. Version 2 uses new metrics for improved Strategy ranking.

Proof of the HSF Concept



This plot shows a 10-month "Walk Forward" Test in which we used HSF to identify the best Strategies to trade based on Hit Rate, and then measured how well those Strategies worked in the next month. In EVERY SINGLE MONTH, selecting Strategies with good historical performance resulted in better trading results in the future month. Alan was right. There IS Gold in the HSF Concept.

Introducing AutoTrade:

An Easy-to-Use Automation Tool.

Nirvana was founded in 1987 on the concept of “Automation for Traders”, and our goal has always been to automate as much of the trading process as possible, so users can be FREE on a daily basis.

In 2005, we released OmniPilot for OmniTrader Professional. Pilot is an automation programming environment, and as such can be a powerful tool – in the right hands.

We realized our customers would like to automate our best Strategies using a very simple interface. AutoTrade is it!

Just tell AutoTrade...

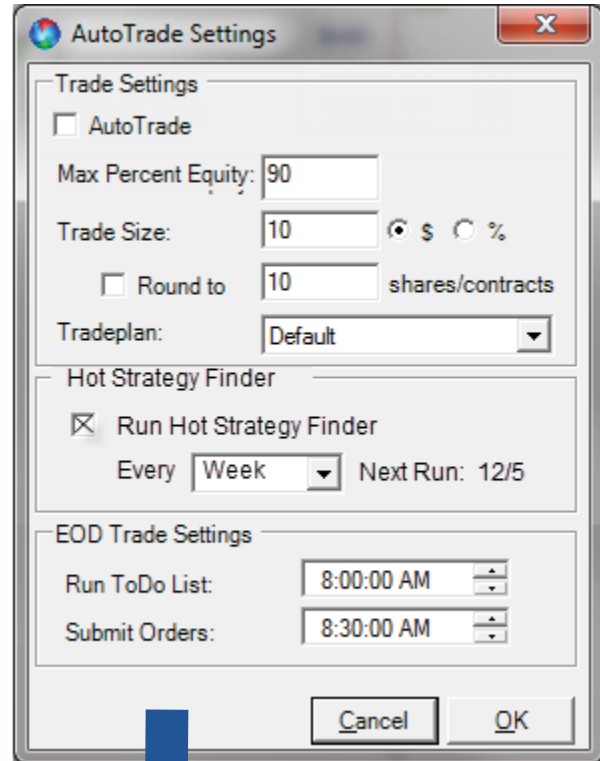
- When to Run
- How to Allocate \$ to Trades
- Click “AutoTrade” & Leave OT Running

AutoTrade will wait “in the background” until the time you specify. Then, it will run the Profile and trade the Signals in the manner you specified. With this feature, you can set it once and then use your OmniTrader each day for any other purpose.

Optionally run HSF, so you always trade the Best Strategies. We upgraded Hot Strategy Finder so it can be “driven” by AutoTrade. Used this way, HSF will run BEFORE AutoTrade runs the selected Strategies to generate Signals and Trades.

Watch it in Action

AutoTrade provides a way for our users to let OmniTrader run on a paper account, so you can see test results before running it on your actual account. Some of us just need a good way to get started, and AutoTrade provides it!



Automatically Run
OmniTrader every day.

Symbol	Sig	BTHR	BTAP	BTNT
EMC	▲	89	32	9
ES	▲	60	42	10
LNT	▲	69	27	13
BMS	▲	82		
HBI	▼	50		
VMC	▼	85		
GLNG	▼	50		
GRA	▼	82		
CLX	▲	50	29	12
AEE	▲	64	17	14
EMV	▲	72	18	14

Paper Trade
or Activate Live
Brokerage.

Paper Account

Test before
you trade!

Broker Account

Interactive Brokers

Announcing: Connors RSI Strategy Suite

Nirvana Strategy Takes Advantage of New Connors Indicator

Several outstanding technical analysts have shared their work, including John Bollinger (Bollinger Bands), Larry Williams (Williams %R), and most recently, Larry Connors, introducing his Connors RSI.

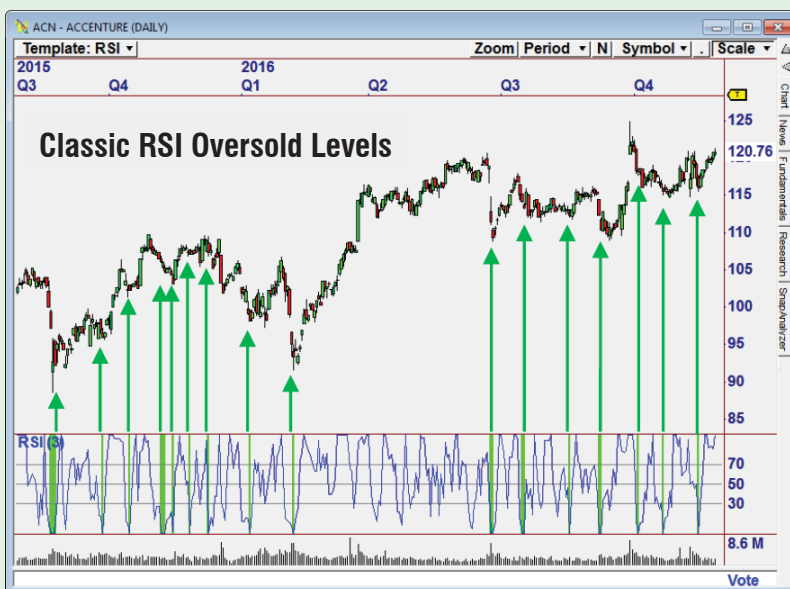
The Connors RSI represents a new way to calculate Relative Strength that combines Classic (Wilder's) RSI with two additional indicators. It is this combination that transformed a good indicator into a truly great one!

Larry observed that the best chances for a Reversal occur (a) after a sequence of consecutive up or down bars and (b) when today's Rate of Change is high compared to historical values.

The charts to the right illustrate the improvement afforded by the Connor's RSI over Classic (Wilder's) RSI. In the case of Classic RSI, we can see that many of the extreme "oversold" points offer good reversal opportunities, but we can also see that many of them are not generated at optimal entry points.

By contrast, the Connors RSI generates extreme oversold levels much less frequently, resulting in fewer, better trading opportunities.

Indicator Comparison



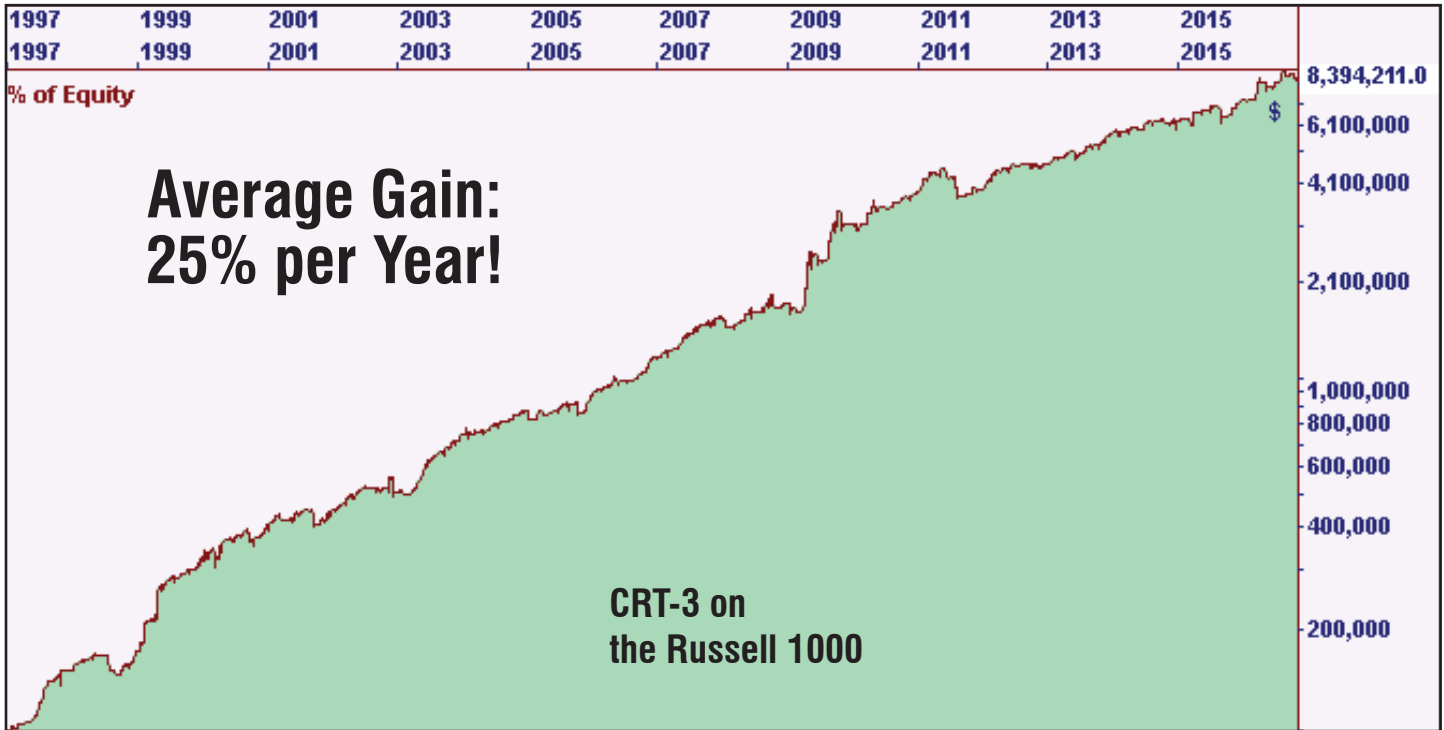
Classic (Wilder's) RSI – Oversold levels often fire “false” signals.



Connors RSI – By combining three separate indicators, oversold levels on Connor's RSI provide fewer, better trading opportunities.

To learn more about Connors RSI:
www.nirvanasystems.com/CRSI

Twenty Continuous Years of Solid Profits!



A New Strategy Based on Connors RSI

Thanks to the new Connors RSI indicator, we were able to apply our additional knowledge to create a phenomenal new Reversion to Mean Strategy!

CRT-3 (Connor's RSI with Trend) uses CRSI and a new Trend Indicator we developed that isolates those CRSI Signals that are firing in the direction of Trend (see Signals, next page).

We ALSO applied the Connors RSI method to Stochastics and Williams %R to create two companion Systems that generate additional Signals, improving overall yield from the Strategy.

As shown in the Portfolio Simulation above, CRT-3 has shown a consistent 25% average annual return over 20 years with very low draw downs. And, the average Profit per Trade is 1.2%! It's one of the best RTM Methods we've ever seen.

20 Year Performance Report

1997	1998	1999	2000
51.52%	12.16%	87.50%	27.53%
2001	2002	2003	2004
9.14%	12.57%	47.34%	18.55%
2005	2006	2007	2008
11.27%	27.66%	31.92%	10.20%
2009	2010	2011	2012
70.30%	23.95%	0.86%	18.59%
2013	2014	2015	2016
23.13%	7.95%	15.19%	15.08%

'With Consistent 25% Average Annual Return — **CRT-3** is one of the Best Strategies I've ever seen!'

— Ed Downs

Recent Trades from CRT-3

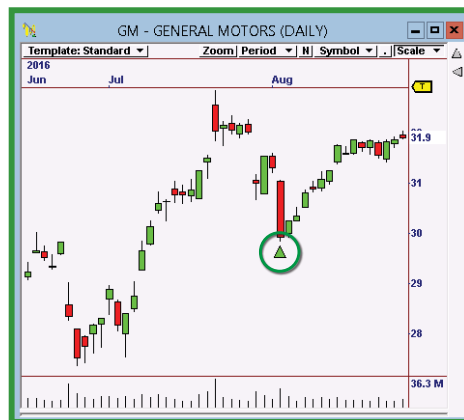
The Best Opportunities are Easy to Trade!

To the right are some recent trades generated by the CRT-3 Strategy.

The Signals generated by CRT-3 appear at optimal Reversion points, making them easy to confirm and trade manually.

INCLUDED! New CRT-3 Scan generates High Probability Trades from the Entire Market

We include a special OmniScan that searches the ENTIRE MARKET for CRT-3 Setups. Using this OmniScan, you are assured of identifying every CRT-3 Opportunity, every day.



Harnessing the Power of Connors RSI

by Jeff Drake

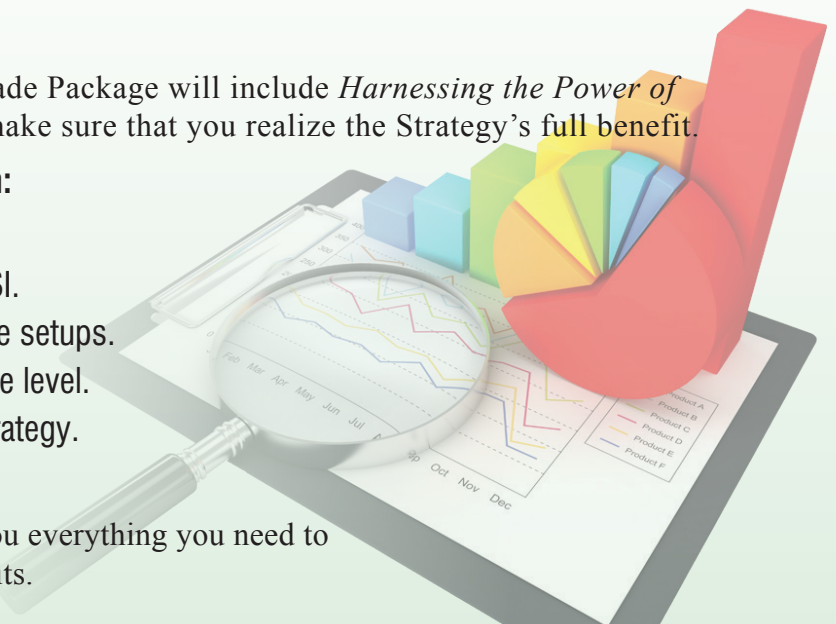
Your purchase of the OmniTrader 2017 Upgrade Package will include *Harnessing the Power of Connors RSI*, a special seminar designed to make sure that you realize the Strategy's full benefit.

In this comprehensive seminar, you will learn:

- How the Connors RSI is constructed.
- The benefits of the CRSI over a simple RSI.
- Why the CRSI provides the most profitable setups.
- How we took the CRSI to a more profitable level.
- Why the CRT-3 Scan can improve any strategy.

... and much more.

Harnessing the Power of Connors RSI gives you everything you need to trade this powerful Strategy for consistent profits.



OmniTrader 2017

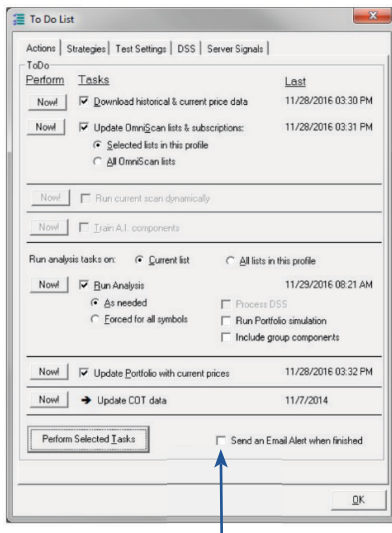
Great Features Users Asked For...

Systems in the Focus List & Tabbed Indicator Panes



In OmniTrader 2017, you can add System Signals to the Focus List for added trade confirmation. You also can use indicator tabs, maximizing chart space and making organizing your indicators easier than ever before. The upgrade also includes the “Hollow Candle” template used by many traders.

Email Notifications



Notify user when “To Do List” tasks have been completed.

Improved Defaults

We have revised “defaults” to values that most users want to use, such as the behavior of mouse wheel zoom, which can be set to display Higher Timeframes (shown to the right).



Convenience Features

- **OmniTrader Configuration Reset** – Restore tool bars and Focus List position back to the “factory” defaults.
- **Retain Date Range** – When new symbols are plotted in the same chart, the chart will keep the current date range.
- **Easy Chart Scale Reset** – When zoomed or scaled a single click now restores chart to normal scale.

Introducing OmniView:

Information all OmniTrader Owners can Use

Market View				Daily Signals		Top Strategies																				
US INDEXES				11/23/2016		<table border="1"> <thead> <tr> <th>Strategy</th> <th>Hit Rate</th> <th>PPT</th> </tr> </thead> <tbody> <tr> <td>XLS-19</td> <td>75%</td> <td>1.5%</td> </tr> <tr> <td>NSP-41</td> <td>72%</td> <td>1.3%</td> </tr> <tr> <td>Hurst</td> <td>68%</td> <td>6.8%</td> </tr> <tr> <td>iTLB2</td> <td>67%</td> <td>4.5%</td> </tr> <tr> <td>CPS Trend</td> <td>65%</td> <td>6.2%</td> </tr> </tbody> </table>			Strategy	Hit Rate	PPT	XLS-19	75%	1.5%	NSP-41	72%	1.3%	Hurst	68%	6.8%	iTLB2	67%	4.5%	CPS Trend	65%	6.2%
Strategy	Hit Rate	PPT																								
XLS-19	75%	1.5%																								
NSP-41	72%	1.3%																								
Hurst	68%	6.8%																								
iTLB2	67%	4.5%																								
CPS Trend	65%	6.2%																								
Symbol	Last	Change	%	XOM - Exxon Mobile - Consolidation Break consistent with oil sector patterns indicat...																						
\$SPX	2142.47	+15.97	+0.75%	IBM - International Bus. Mach. Money Zone Signal near earnings offers great buy opport...																						
\$DJI	18180.74	+94.34	+0.52%	10/17/2016																						
\$COMP	5258.50	+58.67	+1.13%	GLD - Gold Tracking ETF- Saucer Bottom detected on GLD implies higher prices over...																						
US SECTORS				Nirvana Blog		News																				
Sector	Symbol	Change	%	The Market and Swing Trading - Market Modes & Market Analysis Posted 11/23/2016	iTLB 3.0 Indicator Trend Line Break Plug-in Find Reversals FASTER and Earlier Than Ever! Learn MORE																					
Materials	XLB	+15.97	+0.75%	How Artificial Intelligence Revolutionized Trading Posted 11/21/2016 5:00pm																						
Technology	XLK	-15.97	-0.75%	Finding the Best Swing Trading Candidates Posted 11/20/2016 2:30pm																						
Utilities	XLU	+15.97	+0.75%																							
Financial	XLF	+15.97	+0.75%																							
Energy	XLE	-15.97	-0.75%																							
Real Estate	XLRE	+15.97	+0.75%																							
Industrials	XLI	+15.97	+0.75%																							
Consumers	XLP	-15.97	-0.75%																							
Healthcare	XLV	-15.97	-0.75%																							
Oil	USO	+15.97	+0.75%																							
* Market Statistics Delayed up to 20 Minutes				Products OmniTrader VisualTrader Advanced Strategies Data Solutions OmniVest OmniFunds		Education SignalWatch OmniTrader University Books Seminars Webinars		Help and Resources Contact Us Follow Us OmniTrader Updater OmniTrader Forum Professional Forum		Quick Start Videos Upgrade 2017 OmniTrader Overview New Features To Do List Exploring the Focus List																

Now Available in *OmniTrader 2017*

OmniView is a new Window accessible from OmniTrader 2017 that contains timely information relevant to OmniTrader users.

Market Overview – Shows price changes for the current session for primary markets.

Daily Trading Signal – Our trading staff writes about key Signals from OmniTrader and publishes them in the Daily Trading Signal blog. The write-ups are conveniently available in OmniView so users can quickly review the most recent recommendations in their software.

Nirvana Blog – Our education department updates the Nirvana Blog with timely articles on trading techniques and approaches for the current market using OmniTrader.

Top Strategies – We run ALL Nirvana Strategies on our servers every day to determine which ones are working in the current market.

News – Recent releases and notices are posted here, including announcements for upcoming Webinars.

We are pleased to provide this timely, powerful resource to all our OmniTrader 2017 users.



OmniTrader 2017

Know Precisely...

**What to Trade,
When to Trade,
& How to Trade!**